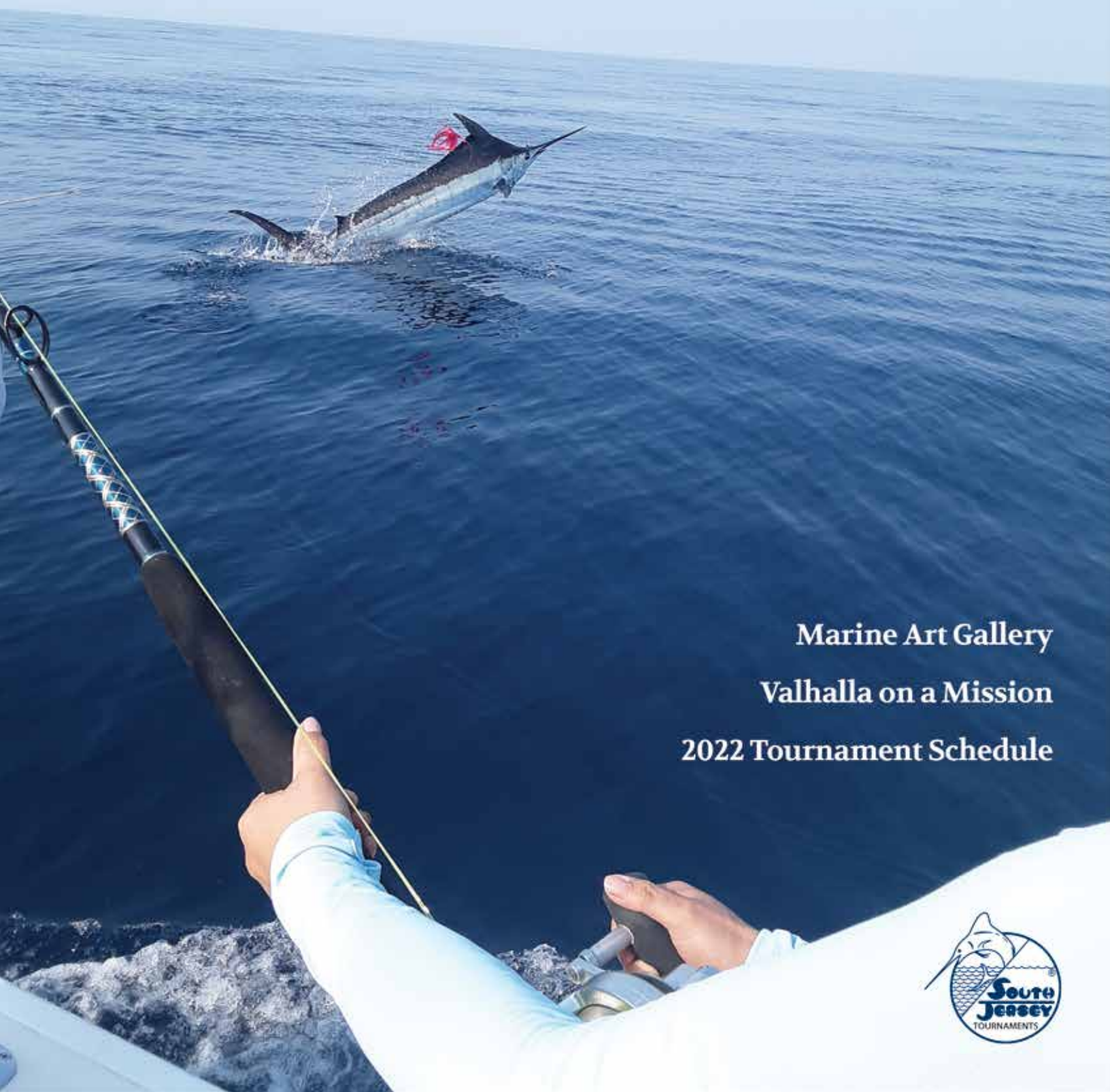


# On The Rip

2022



**Marine Art Gallery**  
**Valhalla on a Mission**  
**2022 Tournament Schedule**







*Albemarle*  
THE CAROLINA CLASSIC

**INVINCIBLE**

**JUPITER**

*valhalla*  
Boatworks

**viking**  
yachts

*Yellowfin*



**We Are Here To Serve You With Six Locations:**

**South Jersey Yacht Sales And Service Center**  
Somers Point, NJ  
(609) 927-1175

**Chart House Marine Electronics & Outfitting**  
Egg Harbor Township, NJ  
(609) 927-1175

**Arnold's Yacht Basin**  
Point Pleasant, NJ  
732-899-9666

**Canyon Club Marina**  
Cape May, NJ  
609-884-1600

**Brielle Yacht Club**  
Brielle, NJ  
732-899-9666

**Palm Beach Office**  
North Palm Beach, FL  
732-899-9666

**SouthJerseyYachtSales.com**



# On The Rip

## 2022 Table of Contents

<b>Editor's Page - Art Catching the Moment</b> .....	3
<b>The 2022 South Jersey Tournament Season</b>	
2022 South Jersey Tournaments Calendar and Details .....	5
The MidAtlantic Tuna Tournament .....	9
The MidAtlantic Cup .....	15
The South Jersey Yacht Sales Offshore Showdown .....	19
The MidAtlantic .....	25
<b>Broken Record - 2021 MidAtlantic Recap</b> .....	31
<b>IGFA Rules</b> .....	37
<b>Marine Art Gallery</b> .....	43
Dennis Friel .....	45
George Kalwa .....	53
Mike Savlen .....	61
KC Scott .....	69
<b>Valhalla Boatworks - On a Mission</b> .....	77
By Karl Andersen	
<b>Fishing Club Focus (The Manasquan River Marlin and Tuna Club)</b> .....	81
By Jeff Merrill	
<b>2022 Offshore Events - Manasquan to Cape May</b> .....	85
<b>Index to Advertisers</b> .....	87

**Cover Photo by:** Carl Ascoli on board the Digger (Cape May) in the Baltimore Canyon 2021

**Angler:** Ariadna Altamiranoo

---

**On The Rip:** Advertising & Tournaments (609) 884-0177 | **Editor:** Walt Rosenberg | **Art Director:** Bob Weber

---

South Jersey Tournaments would like to extend our appreciation to all 2022 tournament sponsors and advertisers in this year's On The Rip. Your support and participation have contributed to making this season the best ever. If you feel that you or your company might benefit from exposure at one of our tournaments or by advertising in On The Rip we encourage you to contact the marketing department at your earliest convenience. Participation in some categories is limited. South Jersey Tournaments reserves the right to modify, edit or refuse any sponsorship, submission, advertisement copy, photographs or graphics. South Jersey Tournaments reserves the right to limit sponsorship of its events and/or advertisements in its publication(s), brochures, etc. Information contained in this publication is believed to be correct at the time of publication but not guaranteed for accuracy.

# Integrity

Our integrity, tenacity, expertise and our "client first" culture separate us from the crowd of typical insurance agencies. *They offer insurance policies, we deliver solutions.*



**CHRISTI**  
INSURANCE | RISK MANAGEMENT  
SOLUTIONS



Christi Insurance has been a partner of South Jersey Marina and Canyon Club Resort for more than 25 years. Their courteous and knowledgeable staff has led many of our slipholders and boat owners to choose Christi for their insurance needs. We use Christi to provide much of our own current business coverage. Their rates are always competitive and we value their expertise and attention to detail.

**Dick Weber, President**

*Insurance programs exclusively endorsed for:*



Contact us today to see first-hand how the *Christi Difference* will benefit you. One call may either save you some money or save you aggravation.

Pennsylvania	New Jersey	Maryland	Florida
320 Bickley Road	609-391-6523	443-856-4609	561-863-4401
Glenside, PA 19036			
215-576-1250 x201			

[www.christiinsurance.com](http://www.christiinsurance.com) | [christi.insurance@christiinsurance.com](mailto:christi.insurance@christiinsurance.com)

Business • Personal • Marine • Employee Benefits

**Proudly offered through  
Chubb Recreational Marine Insurance®**

**CHUBB®**

© 2017 Chubb. Coverages underwritten by one or more subsidiary companies. Not all coverages available in all jurisdictions. Chubb® and their respective logos are registered trademarks.





***“Painting from nature is not copying the object, it’s realizing one’s sensations”***

***~Paul Cezanne***

In doing exhausting research on the origins of billfish pursuit, we came upon a little-known rendering by Michelangelo hidden deep within the depths of the Sistine Chapel. It is difficult to ascertain whether the subject in this tableau is just along for the ride or slipped while trying to leader the fish. We will leave it up to the reader to solve this mystery. The illustration in question can be found on page 43, kicking off the Marine Art Gallery section in this year’s issue. Our

thanks to the outstanding artists who were kind enough to share their work with us.

Karl Anderson once again graces our pages with an in-depth article on the emergence of Valhalla Boatworks at the Viking Mullica plant. Karl and I spent the day with General Manager John Leek IV and his dedicated workforce, the experience was nothing short of mind-blowing. The accomplishment of bringing the Valhalla concept to reality with unparalleled teamwork between the Viking

engineering department, the mother company, and the Mullica workforce has led to the creation of an outstanding end product.

The Manasquan River Marlin and Tuna Club is one of the oldest fishing clubs in the United States. Jeff Merrill did a deep dive into the storied history of the club and the notable members, catches, and crews past and present. The contributions to the advancement of our sport and conservation efforts by this and many other coastal fishing clubs deserves our appreciation and admiration.

The 2021 30th Anniversary Mid Atlantic Tournament was once again a record-breaking event. Record breaking number of participating boats, record breaking overall payout, and most importantly, incredible catches in all categories. The Mid Atlantic Recap in this issue breaks down a wild week on the rip. Thanks once again to all our participants, the host marinas, and sponsors for making the Mid Atlantic and our entire tournament season so electrifying.

Walt Rosenberg, Editor







*"... the ultimate marine enclosure"*



## Quality you can see and fabrication you can rely on

Costa Marine has been an industry leader for decades providing you with the finest marine canvas, enclosures and furnishings that are uniquely handcrafted using only the best materials.



For more information about our complete range  
of services, visit [CostaMarineCanvas.com](http://CostaMarineCanvas.com)

• 609.965.1538 •

Enclosures • Covers • Marine Interiors • Bridge & Mezzanine Cushions



# The 2022 Tournament Season!

by Tournament Director Aaron Hoffman

*Another exciting year is shaping up for our tournament season for 2022! With some big changes to existing events and keeping traditions alive with some of the favorite events, we have many reasons for you to get ready to jump aboard with us too!*

**The MidAtlantic Tuna Tournament (June 22-26)** The MidAtlantic Tuna tournament, which was already an established event in June, gives participants the option of two-day trips or one overnight trip. Either gives a total 22 hours of lines in fishing time on the water, PLUS up to 4-1/2 hours of run time to the fishing grounds. With that much time on the water crews can now target a longer window for their species of choice or change tactics throughout the tournament! This is why we have added a

"Battle of the Tuna" Calcutta which is the only Calcutta where a stringer of yellowfin and/or bigeye can take a prize payout. This certainly will be an exciting Calcutta battle to watch throughout the tournament as the weigh-ins take place.

**The MidAtlantic Cup (July 4)** is another one of our growing events on the tournament calendar. While it may not have the grand scale appearance as some of our other events, if you're a blue marlin fishing enthusiast, you certainly don't want to overlook this tournament by any means. This niche event is a one-day, high stakes, multiregional port, winner-take-all tournament. **Currently, we have a starting purse of \$ 32,000 that**

**rolled over from 2021.** This, plus an expected increase in number of boats to come join in on the action in 2022, will certainly make for a large payout. Fish from anywhere within the MidAtlantic Bight with four official tournament weigh stations, based out of Manasquan NJ, Cape May NJ, Ocean City MD, and Virginia Beach VA, all are available to weigh-in your qualifying blue marlin. Teams can leave the dock at any time prior to the tournament lines in time of 8:30am and fish through 4:30pm. This winner take all, best of the best event will surely take bragging rights to the next level!

**The South Jersey Yacht Sales Offshore Showdown (July 6-9)** was a great event enjoyed by all during the 2021 tournament sea-



son. After having to put the event on hold in 2020 due to Covid-19 restrictions, we were able to get things back to normal this past year with some venue changes. Now designed to feature more of our family friendly seaside town, the captains meeting kickoff at the Cape May Brewery was a nice touch for the following day's events. While the weather and fishing didn't cooperate as much as we all liked, it didn't stop the friends and

see 2022 on pg 7

**The MidAtlantic Tuna Tournament • June 22-26, 2022**

**The MidAtlantic Cup • July 4, 2022**

**South Jersey Yacht Sales Offshore Showdown • July 6-9, 2022**

**Cape May Marlin Tournament • July 28-30, 2022**

**The 30th Annual MidAtlantic • August 21-26, 2022**





THE SOONER YOU SEE IT,  
THE BETTER YOU CAN AVOID IT.



////// FANTOM™ RADAR SERIES ////  
TRACK WEATHER UP TO 96 NAUTICAL MILES AWAY



from 2022 on pg 5

families from enjoying the days on land and on sea. Wrapping up on Saturday evening at the elegantly decorated beachfront Grand Hotel for dinner and awards, all the participants came together to congratulate each other on their catches before closing out the event. For 2022 we're planning to continue the same Fish – Lay – Fish format as previous years, and exploring the local spots of the City of Cape May and enjoying the dockside hospitality at Canyon Club Resort Marina. With two days of family friendly competitive offshore fishing, and all-inclusive hospitality, this event continues to be a popular kick off for the offshore season.

**The MidAtlantic Tournament (August 21-26)** continues to be the icing on the cake to most big game fishing enthusiasts along the eastern seaboard. With high stakes, big payouts, and hospitality that are all second to none, the MidAtlantic is certainly something to get in on each year. The 30th Anniversary was a tournament to be recalled on for years. With a record purse payout of nearly \$6 Million, half of the purse was taken by 3 boats alone, Sea Wolf (82 lb. White Marlin), Pipe Dreamer (235 lb. & 227 lb. Bigeye), Billfisher (1135 lb. Blue Marlin). The 2021 tournament was certainly a nail biter with plenty of board shake ups throughout. With the tournament turnout we had last year we're looking to do the same for 2022 in all aspects and continue our Anniversary Calcutta by corresponding it to the year. We are once again expecting a big turnout and large purse to keep the momentum of such a great event going. We look

forward to having you join us for one of the best events in the world from beginning to end!

With another exciting year ahead, we look forward to seeing old friends and meeting new in each event this year. We have always built each event with top notch hospitality because it is not just a competition but an event for friends, families, all with a shared passion of spending time on the water. The season always comes and goes quickly, but the memories last a lifetime!

We'll see you at the scales here in 2022!

Sincerely,

Aaron T. Hoffman

South Jersey Tournament Director

# Joe Canal's

Rio Grande & Cape May, NJ

**LARGEST SELECTION IN  
SOUTH JERSEY**

**BEER - WINE - LIQUOR  
OPEN 7 DAYS A WEEK - 365 DAYS A YEAR**

Joe Canal's Rio Grande  
1613 RT 47 South, Rio Grande  
(609) 886-9786

Joe Canal's Cape May  
918 Rt 109 South, Cape May  
(609) 884-7676

**WWW.JOE-CANALS.COM**





# IRON FIST, MEET VELVET GLOVE.



The muscle of industry-leading power-to-weight ratios getting you to and from the fishing grounds faster than your competition...

The sophisticated stealth of quiet, smooth, and smoke-free operation that makes your time on the water even more enjoyable...

The satisfaction knowing that you don't have to sacrifice comfort for world-class performance.

With a hp range of 1,360 to 2,600, these premium 10V, 12V (now with 2,002 mhp), and 16V powerhouses propel **the fastest** sportfishing vessels in the world — is your boat one of them?

**The mtu Series 2000. Ready for battle.**



[www.johnsontowers.com](http://www.johnsontowers.com)



AUTHORIZED DISTRIBUTOR FOR:



A Rolls-Royce  
solution





Get the  
Tournament  
App



# THE MIDATLANTIC TUNA TOURNAMENT

## JUNE 22-26, 2022

The MidAtlantic Tuna Tournament is the kick-off event to the South Jersey Tournament season! Each June, the offshore waters off the coast of Southern New Jersey have some of the most productive tuna fishing of the season. As the early season eddies push in that warm Gulf Stream water, the yellowfin and bigeye bite are red hot. This year's MidAtlantic Tuna Tournament is one way to dust off the rods and hit the canyons for some high stakes tuna competition.

Now established on June 22nd – 26th, this year's MidAtlantic Tuna Tournament will certainly be one you won't want to miss! With plenty of fishing format options to choose from to adapt to any last minute weather changes, this event provides the most time on the water to get that right bite. Our signature Calcutta options for the event give participants every chance to get some fish on the board and take a significant portion of the total purse.

Whether you prefer to target bigeye in the deep or search for yellowfin inside the edge, the MidAtlantic Tuna Tournament is the most versatile event to get you on the board! As the warm June weather starts to heat things up for the rest of the fishing season, be sure to mark your calendar for the MidAtlantic Tuna Tournament and we'll see you at the scales!

## SCHEDULE OF EVENTS

### WEDNESDAY, JUNE 22

*At South Jersey Marina Saltwater Cafe*

6:00pm Late Registration

7:30pm Captains' Meeting

### SUNDAY, JUNE 26

*At South Jersey Marina Saltwater Cafe*

9:00pm Tournament Awards,

Catered Dinner & Beverages

### Weigh-Ins

*At Canyon Club Resort Marina*

Thursday, Friday, Saturday, Sunday

5:00pm Scales Open | 8:00pm Scales Close

### 4 Day Trip Options

*Captain's Choice – Fish 2 of 4*

Thursday, Friday, Saturday, Sunday

12:00am Depart Inlet

4:30am Lines In

3:30pm Lines Out (11 Hours - Same Day)

### 3 Overnight Trip Options

*Captain's Choice – Fish 1 of 3*

Thursday-Friday, Friday-Saturday, Saturday-Sunday

1:30pm Depart Inlet

5:30pm Lines In

3:30pm Lines Out (22 Hours - Following Day)

# WWW.SOUTHJERSEYTOURNAMENTS.COM





# 68 CONVERTIBLE POWER TRIP

Now available with Caterpillar's  
2433 MHP triple-turbo engines.



Made in America with Experience & Pride  
609.296.6000 • [vikingyachts.com](http://vikingyachts.com)



# THE MIDATLANTIC TUNA TOURNAMENT

**JUNE 22-26, 2022**

## TOURNAMENT ENTRY

### **Tournament Entry w/Included Calcutta - \$3,000**

Tournament Entry includes team's tournament registration and hospitality.

\$1,500 of the fee includes entry into the "Battle of the Tuna" Calcutta.

This allows all teams entered to go head to head for heaviest stringer comprised of either Yellowfin and/or Bigeye.

### **Battle of the Tuna Prize Payout**

#### **HEAVIEST STRINGER OF YELLOWFIN OR BIGEYE**

##### **HEAVIEST STRINGER (UP TO 4 FISH)**

1st = 50% | 2nd = 30% | 3rd = 20%

## TOURNAMENT CALCUTTAS

### **35' & UNDER CALCUTTA - \$1,000**

*The 35' & Under Calcutta is for boats that are 35' or less in length according to the given boat's model name. This Calcutta option gives entrants the opportunity to compete for the overall heaviest out of the qualifying species.*

#### **35' & Under Prize Payout**

##### **HEAVIEST YELLOWFIN | HEAVIEST BIGEYE**

1st Place Each Category = 50%

## IN THE GAME CALCUTTAS

*In The Game Calcuttas give teams the opportunity to specifically target either Yellowfin or Bigeye in the selected Calcutta. Without putting the most at risk, the following options can be entered into as either a base entry to double down on at a higher Calcutta level or as an optional backup plan to fish for during the tournament.*

#### **In The Game Yellowfin - \$1,500**

#### **In The Game Bigeye - \$1,500**

#### **In The Game Yellowfin & Bigeye Prize Payout**

*Each Calcutta entry above pays out 50% to Heaviest Overall & 50% to Heaviest Stringer*

##### **HEAVIEST OVERALL**

1st = 25% | 2nd = 15% | 3rd = 10%

##### **HEAVIEST STRINGER (UP TO 4 FISH)**

1st = 25% | 2nd = 15% | 3rd = 10%

## HIGH STAKES CALCUTTAS

*High Stakes Calcuttas give teams the opportunity to double down on the individual target species of the selected Calcutta. It is recommended that participants enter the Calcutta based on that species being their primary target during the tournament.*

### **High Stakes Yellowfin - \$5,000 | High Stakes Bigeye - \$5,000**

#### **High Stakes Yellowfin & Bigeye Prize Payout**

*Each Calcutta entry above pays out 50% to Heaviest Overall & 50% to Heaviest Stringer*

##### **HEAVIEST OVERALL**

1st = 25% | 2nd = 15% | 3rd = 10%

##### **HEAVIEST STRINGER (UP TO 4 FISH)**

1st = 25% | 2nd = 15% | 3rd = 10%



# Huk



TO CATCH MORE FISH REQUIRES  
SKILL, LUCK, TENACITY AND - ONE COULD ARGUE -  
**EXACTLY THE RIGHT SHIRT.**

**ICON X.** THE MOST BREATHABLE SHIRT, EVER.



 [hukgear.com](http://hukgear.com)

# THE MIDATLANTIC TUNA TOURNAMENT

JUNE 22-26, 2022

## TOURNAMENT RULES

### TIMES & BOUNDARIES

- 1 All boats must sail from and return to Cape May Inlet.
- 2 **Boats fishing 11 hour trips** (Day) are not permitted to clear the Cape May Sea Buoy prior to 12:00 AM on each scheduled fishing day. **Boats fishing 22 hour trips** (Overnight) are not permitted to clear the Cape May Sea Buoy prior to 1:30 PM on each scheduled fishing day.
- 3 **For Boats Fishing 11 hour trips** (Day) fishing begins at 4:30 AM on each scheduled fishing day. **For Boats Fishing 22 hour trips** (Overnight) fishing begins at 5:30 PM on each scheduled fishing day. No lines, chum, or bait of any kind may be put into the water prior to this time.
- 4 **For Boats Fishing 11 hour trips** (Day) & **22 hour trips** (Overnight) fishing ends at 3:30 PM on each scheduled fishing day. Any fish hooked prior to the deadline may be played until boated or released, provided that said fish is announced hooked on the tournament channel before the deadline.
- 5 Boundaries for the tournament will be 125 nautical miles from the Cape May Sea Buoy.
- 6 Weigh-in begins at 5:00 PM. All eligible fish must be available for weigh-in at Canyon Club Resort Marina by 8:00 PM aboard the boat on which they were caught.
- 7 Each boat must pick either one overnight trip or two day trips by submitting the official Fish-Day Form prior to leaving the dock on the day selected. Said forms must be either physically delivered by a member of the boat's crew to the dockmaster's office at South Jersey Marina or Canyon Club Resort Marina OR photographed and texted to the Tournament Director. The boat must be dockside when the fish day is declared. Any boat not submitting the form will be assumed to be laying on that day. Boats may not fish on a lay day unless all of their available fish days have been used. Boats with mechanical problems or other emergencies may use lay days to arrive late to the tournament so long as it is with the advance permission of the Tournament Directors and they conform with all other rules. To withdraw a Fish Day Form the boat must be dockside and the Tournament Directors notified within three hours after fishing beginning on the day selected.

### ANGLING/FISHING

- 8 Participants shall comply with I.G.F.A. equipment and angling rules with the following exceptions: A) A fish may be hooked by someone other than the angler provided the rod is immediately transferred to the angler after hook-up. From that time on, the angler must fight the fish alone until boated or released. B) No harpoons, dart gaffs or greensticks. C) Spreader bars with hooks ARE permitted. D) Fish may be dispatched by gun or bangstick after they have been wired. The Tournament Directors retain sole authority for interpreting and implementing the I.G.F.A.'s rules.
- 9 There is no limit on the number of lines or teasers.
- 10 All fish boated over 75 lbs. must be reported over the tournament channel at the time of the catch.
- 11 There are **4 available "Day"** fishing options and **3 available "Overnight"** fishing options for the tournament. Boats may choose **either 2** of the available days **or 1** of the available overnights, captains' choice; no weather committee. The crew members of each individual boat will be solely responsible for the decision as to which day or night to fish.
- 12 Anglers may not switch to another boat nor can anyone from another boat come aboard to assist in fighting or boating a fish.

### SCORING/PRIZES

- 13 Only one day need be fished for the tournament to be considered official and prizes to be awarded. 94% of Calcutta entries will be paid out.
- 14 Qualifying species are Bigeye and Yellowfin. Bluefin Tuna will not be eligible for awards in this tournament.
- 15 Boats may weigh up to 3 Yellowfin and 3 Bigeye per fish day. Overnight trips will count as two fish days. Participants will be given tags which must be securely attached to each fish prior to being weighed and should include boat number and trip type identified.
- 16 Fractional weights will be rounded to the nearest pound.
- 17 Up to 4 fish will be counted towards each tuna stringer Calcutta.
- 18 In the event of a tie in the cash prize categories, the prize money will be equally divided between those tying.
- 19 In the event that all places are not filled the unwon prize money will be proportionally divided among the winners of that prize.
- 20 In the event that no qualifying fish are caught in a Calcutta, the entry fee for that Calcutta will be returned.
- 21 **35' & Under Calcutta:** If no qualifying fish is taken in any category, the unwon prize money will be equally divided among the winners of the other categories.
- 22 In order to be eligible for awards, prizes, and calcuttas, fish must be caught in compliance with all tournament rules. Said rules include conformance to state and federal size limits and possession of a current NMFS angling, general or charter/headboat category HMS permit.
- 23 All fish eligible for cash prizes may be subject to examination by the Tournament Directors, consulting biologists and/or Torrymeter, should there be any question as to the "freshness" of the catch. It shall be the responsibility of the participant to keep all eligible catches in suitable and proper condition until weigh-in. In the event of any disputes arising from such examination, the decision of the Tournament Directors shall be final. Polygraph examination may be required of winning crews.

### ADMINISTRATION

- 24 The designated tournament VHF radio channels are 69 (Primary) and 71 (Alternate).
- 25 Registration is by boat rather than by angler. Tournament Directors reserve the right to decline entry of any boat or crew.
- 26 The Tournament Directors and hosting facilities assume no liability or responsibility for any damage or loss.
- 27 In the event of a boat disability, contestants may transfer to another boat, not entered in the tournament, and may fish in the name of the original, with the prior approval of the Tournament Directors.
- 28 Allegations of violations of any of the above rules may be submitted only by an official tournament registrant and must be submitted in writing on the day of the alleged infraction. In the event of such an allegation, the Tournament Directors will have the sole and exclusive responsibility to investigate the alleged incident and to rule as to whether any violation materially aided the angler, crew, or vessel, or otherwise affected the outcome of the tournament. Any subsequent penalty will be solely at the discretion of the Tournament Directors and shall be final. In all cases, registrant and their crews agree to be bound by the ruling of the Tournament Directors.





Photo: Hatteras

# Robust Finishes for Every Condition

No matter where your next challenge takes you to, you can always rely on our complete ALEXSEAL® yacht coating system.

Our durable products have proven themselves again and again in harshest environments, meet the highest demands of modern-day sports fishing and offer long-lasting protection against threats like saltwater abrasion or UV exposure.

📷 [instagram.com/alexsealpaint](https://www.instagram.com/alexsealpaint)  
f [fb.com/AlexsealYachtCoatings](https://www.facebook.com/AlexsealYachtCoatings)

[WWW.ALEXSEAL.COM](http://WWW.ALEXSEAL.COM)

**ALEXSEAL®**  
Yacht Coatings





Get the  
Tournament  
App



# THE MIDATLANTIC CUP

## BLUE MARLIN TOURNAMENT

# JULY 4, 2022

The 2022 MidAtlantic Cup has continued to attract participants in search for the majestic blue marlin up and down the East Coast. As the largest open boundary tournament with weigh stations from Manasquan Inlet to Virginia Beach, this tournament is the next **MUST DO** event for any marlin fishing enthusiast!

Starting off with a \$32,000 prize purse rolled over from last year's tournament, this year's MidAtlantic Cup will certainly climb higher as teams return to the battle grounds in search for a winning blue marlin to bring back to the scales!

This is your chance to compete with marlin anglers across the region. From Sandy Hook, NJ to Virginia Beach, VA all are welcome to join in on the action. This event allows participants to depart at any time and from any inlet they choose and run as far as they want. Fishing begins at 8:30AM and ends at 4:30PM on July 4th. This one day tournament has only one place to fill... First. A winner take all, best of the best event that surely is going to take bragging rights to the next level.

If you're looking to compete on an additional level, MidAtlantic Cup also coincides with the Blue Marlin World Cup for a chance to not just be the best in the region, but the best in the WORLD! So who exactly has the best Blue Marlin fishing action in the MidAtlantic region? Only time will tell on July 4th 2022 during the MidAtlantic Cup!

## ENTRY FEE & CALCUTTA

**Tournament Entry Fee \$2,000**

1st Place Heaviest Qualifying Blue Marlin

**Optional MidAtlantic Cup Calcutta**

**Entry Fee \$3,000**

**1ST PLACE HEAVIEST QUALIFYING BLUE MARLIN**

**WINNER TAKE ALL PRIZE MONEY PURSE**

See Tournament Rules & Regulations for Details

## SCHEDULE OF EVENTS

January 1 – June 18 | Open Registration

June 18 – July 3 | Open Online Registration Only

July 3 – 5:00PM | Registration Deadline

July 4 – 8:30AM | Lines In

July 4 – 4:30PM | Lines Out

July 5 – 12:00PM

Weights and Measures Submission Deadline

Online Registration Until July 3rd 2022

[www.southjerseytournaments.com/midatlantic-cup](http://www.southjerseytournaments.com/midatlantic-cup)

## MIDATLANTIC CUP OFFICIAL WEIGH STATIONS

**Manasquan River Inlet**

Hoffman's Marina

**Cape May Inlet**

Canyon Club Resort Marina

**Ocean City Inlet**

Sunset Marina

**Rudee Inlet**

Virginia Beach



# ROFFS™

## OCEANOGRAPHIC FISHING ANALYSES

PRODUCTIVE FISHING TRIPS START WITH ROFFS™



### The MidAtlantic

150+ Winners In the Money Over the Past 7 Years!

2021 MD **State Record** Blue Marlin (1135 lbs.) set by ROFFS clients Captain Jon Duffie, Jeremy Duffie & Billy Gerlach (Billfisher) during the 2021 MidAtlantic.



**665**

tournament winners in 2021!

**10,126**

winners over the past 30+ years!

LOCATES FISHING HOT SPOTS  
TRACKS STABILITY OF FAVORABLE OCEAN FEATURES  
INCLUDES MAP & TEXT  
CATCH REPORTS  
OFFSHORE UPDATES  
CURRENTS & FRONTAL  
WATER TEMPERATURE (SST)  
OCEAN COLOR/CHLOROPHYLL  
CLOUD FREE SST & OCEAN COLOR/CHLOROPHYLL FORECASTS  
BOTTOM TOPOGRAPHY/STRUCTURE  
GEOREFERENCED COORDINATES  
GPS & LORAN



**mazu™**  
SportFishing App



**FATHOM SCIENCE**

Open your ROFFS™ analysis on your iPad directly on the App!

**ROFFS OCEAN FISHING FORECASTING SERVICE**  
**WWW.ROFFS.COM - FISHING@ROFFS.COM - 321.723.5759**



# THE MIDATLANTIC CUP

JULY 4, 2022

## TOURNAMENT RULES

1. **Entry fee:** \$2,000 per boat (each boat is referred to as "Participant").
2. **Optional MidAtlantic Cup Calcutta:** \$3,000 per Participant (the "MidAtlantic Cup Calcutta or MACC").
3. **Payment and Acceptance of Entry Fee:** Payment can be made by standard commercial means either by mail, wire transfer or over the internet. After June 17, 2022, only internet credit card payments and cash (US currency only) will be accepted. **All funds must be available without restriction to South Jersey Tournaments on or before 5:00pm, July 3, 2022 (unless otherwise stated, all times in the Rules refer to US EST).** Each Participant must receive a confirmation number prior to July 4 which shall confirm Participant's entry into the Tournament.
4. **Revocation of Entry:** South Jersey Tournaments reserves the right in its sole and absolute discretion, to reject or revoke participation by any Participant for any reason. Revocation may be communicated or sent to Participant by phone, fax or email and is effective when sent by South Jersey Tournaments.
5. **Withdrawal:** Refunds will only be made for withdrawals if a written withdrawal and refund notice signed by the Participant is received by South Jersey Tournaments on or before 5:00pm, July 3, 2022.
6. **Qualifying fish:** The qualifying length for Blue Marlin is 106 inches (LJFL). All fish below the qualifying length and those fish not expected to be the heaviest shall be released.
7. **Qualifying fish being weighed:** Blue Marlin that meet the minimum length must be brought, aboard the boat on which it was caught, to an Official weigh station of The MidAtlantic Cup to be weighed. The fish must be available by midnight.
8. **Winning fish:** The winning fish will be the heaviest qualifying blue marlin caught in accordance with these Tournament Rules.
9. **IGFA and Government Rules:** Subject to the express modifications set forth in these Tournament Rules, each Participant shall comply with the IGFA rules which can be viewed at [www.igfa.org](http://www.igfa.org) under "Fishing," and with all applicable government fisheries regulations. Tournament Anglers MUST use only non-offset circle hooks when deploying natural bait or natural bait artificial lure combinations. Tournament anglers may deploy "J" hooks with artificial lures.
10. **Boundaries:** There are no boundaries for this tournament.
11. **Prize Money and Distribution:** Prize money is awarded for first place only in this winner takes all tournament to the Participant catching the heaviest qualifying blue marlin. Prize money shall be equal to 80% of Tournament Entry Fees (the "Prize Money"). The Prize Money will be distributed to the "Payee" designated in writing by Participant. **IN THE EVENT THAT A QUALIFYING FISH IS NOT CAUGHT, THE TOURNAMENT PRIZE MONEY (TOURNAMENT ENTRY FEES MINUS 20%) WILL BE ROLLED OVER AND ADDED TO THE PRIZE MONEY FOR THE 2023 TOURNAMENT.** Reentry and payment of the 2023 Tournament Entry Fee will be required to participate in the 2023 MidAtlantic Cup.
12. **MidAtlantic Cup Calcutta:** Entry in the MidAtlantic Cup Calcutta is optional, and all Tournament Rules will apply. The winning MACC Participant will be the MACC Participant catching the heaviest qualifying blue marlin. The MACC is a winner takes all event with prize money equal to the total MACC entry fees minus 20% (the "MACC" Prize Money"). The MACC Prize Money will be distributed to the "Payee" designated in writing by Participant. If there is no MACC winner, 80% of the MACC entry fees will be refunded.
13. **Departure:** Boats may depart at any time to be able to reach the fishing grounds.
14. **Fishing hours:** Lines in the water at 8:30am and out of the water at 4:30pm in the Participant's local time zone. Boats may catch bait prior to lines in. If a hookup is reported to MidAtlantic Cup headquarters prior to lines out and the angler reasonably believes that the marlin is the winning fish, the angler may continue fighting the marlin.
15. **Video:** South Jersey Tournaments reserves the right to require the winning team to provide a video of boated fish along with continuous video of GPS time and date to verify fish was caught during tournament hours.
16. **Polygraph:** South Jersey Tournaments reserves the right to require that the angler and/or any members of the crew pass a polygraph test, administered in the manner determined by South Jersey Tournaments, in order to collect the Prize Money. All tests or other verification costs incurred by South Jersey Tournaments shall be paid out of the Prize Money.
17. **Determination and Verification of Fish Size:** Fish weight as well as length (as measured from the tip of the lower jaw to the fork of the tail) and girth (the "Weight and Measurements") shall be taken by a qualified weigh master approved by South Jersey Tournaments. At least two independent witnesses are required to witness the taking of the Weight and Measurements. The Weight and Measurements along with photos taken to verify the Weight and Measurements and the witnesses' names and contact information shall be submitted to South Jersey Tournaments as soon as reasonably possible, but no later than noon, July 5. An observer approved by South Jersey Tournaments may be required for any Participant fishing in a remote area where there are no other Participants (the "Remote Area"). South Jersey Tournaments shall have the right to refuse any entry if it believes that adequate verification procedures are not available in the Remote Area to modify verification compliances and procedures in its sole discretion.
18. **Fishing Line Requirements:** Any line (monofilament, Dacron or braided line) with a manufacturer's stated breaking strength of 100 pounds or less; also accepted is any line labeled as "IGFA-rated or Tournament-rated" with a breaking strength of 130 pounds or less. Backing of ANY SIZE is permitted as long as the top shot does not exceed 130lb. test IGFA or 100lb manufacturers stated. IGFA Top Shot & backing rule. *The catch shall be classified under the breaking strength of the first five meters of line directly preceding the double line, leader or hook. This section must be comprised of a single, homogenous piece of line.*
19. **Reporting:** Participants shall use their best effort to report, as soon as possible, when a fish is hooked and then when any large blue marlin is boated and the estimated weight of the fish. South Jersey Tournaments may provide Tournament day activity on The MidAtlantic Cup website, or through Twitter or Facebook, as it occurs throughout the day, however, in no event shall South Jersey Tournaments have any liability for any such information that may later turn out to be inaccurate or false.
20. **Adverse Conditions:** It is the responsibility of each Participant to decide in advance whether to fish on July 4. Participants shall not be entitled to refunds for the Tournament unless Participant complies with the refund rules set forth above. Participant shall not be entitled to a refund after the refund deadline due to the inability of Participant to fish on July 4 for any reason, including, but not limited to bad weather, adverse sea conditions, other acts of God, mechanical or physical conditions or other similar conditions or events.
21. **Dispute Resolution:** In order for any dispute or protest to be considered it must be submitted to South Jersey Tournaments prior to 5:00pm on July 5, 2022. Any dispute shall be determined and resolved by the sole and absolute discretion of South Jersey Tournaments rules committee and said determination and/or resolution shall be final and binding.
22. **Indemnification:** Anglers/ crews/boat owner and guests of Participant (collectively "Participating Parties") enter the Tournament at their own risk, individually and collectively, and assume all risks which might occur. Participating Parties hereby release and forever discharge South Jersey Tournaments and their agents, employees, representatives, attorneys, shareholders, officers, directors, assigns, heirs and successors-in-interest from and against any and all claims, demands, obligations and causes of action, which Participating Parties may have arising out of or in any way connected with their participation in the Tournament.
23. **Jurisdiction:** In the event of any litigation arising out of the Tournament, participant hereby consents to the jurisdiction of the New Jersey courts with venue in Cape May County, New Jersey.
24. **Consent to Rules and Failure to Abide by the Rules:** Submission of your entry into the Tournament constitutes your acceptance of the Rules and your agreement to abide by the Rules. Failure to abide by the Rules shall constitute disqualification.
25. **Consent to use Photo:** Participants consent to South Jersey Tournaments' use their photos and any likeness in future publication or commercial use.



# FIND A PARTNER JUST AS SERIOUS AS YOU ARE.



WHEN YOU'RE SERIOUS

**Canyon Club Resort Marina**

900 Ocean Drive  
Cape May, NJ, US, 08204  
609-884-1600

**Arnold's Yacht Basin**

1668 Beaver Dam Road  
Pt. Pleasant, NJ, US, 08742  
732-899-9666



**South Jersey Yacht Sales & Service Center**

680 Bay Ave  
Somers Point, NJ, US, 08244  
609-927-1175

**Brielle Yacht Club**

201 Union Ln  
Brielle, NJ, US, 08730  
732-899-9666



Get the  
Tournament  
App



## South Jersey Yacht Sales Offshore Showdown JULY 6-9, 2022

Dear Boat Owner,

I am pleased to personally invite you to the 5th Annual South Jersey Yacht Sales Offshore Showdown, July 6th thru the 9th. Please join us for a few days of fishing, fun and camaraderie among other Viking, Ocean, Cabo, Albemarle, Jupiter, Invincible, Valhalla, Yellowfin and customers of South Jersey Yacht Sales.

The 2022 the captains meeting will kick off at the Cape May Brewery. All families and crew are invited to join the fun. We will have pool-side dining after Friday's fish day, Lay Day events that are fun for the entire family, and the awards banquet at The Grand Hotel in downtown Cape May. All transportation to and from The Showdown to the event venues in Cape May will be provided by the local Cape May trolley service.

The Showdown is intended to be a relaxing time among boat owners, their family and friends. Building on 2021's success, we know this year's event will be great!

Please take a moment to review the enclosed tournament brochure for details and we look forward to hearing back from you soon.

Best wishes for a successful 2022 season!

George C. Robinson III  
President,  
South Jersey Yacht Sales







[WWW.ALBEMARLEBOATS.COM](http://WWW.ALBEMARLEBOATS.COM)

## TRIPLE THREAT

We all need an edge offshore and triple 300hp gets you there and back, FAST and DRY. The new Albemarle 30 Express is built with the strongest materials and designed for the toughest conditions. Combined with our spacious cabin, comfortable seating, and over-sized cockpit, there won't be many days you'll miss your center console.



*Albemarle*  
THE CAROLINA CLASSIC



South Jersey Yacht Sales & Service Center, Somers Point, NJ - 609. 927.1175  
Chart House Marine Electronics & Outfitting, Egg Harbor, NJ - 609.927.1175  
Pt. Pleasant, NJ - 732.899.9666 | Cape May, NJ - 609. 884.1600  
Brielle, NJ - 732-899-9666 | [SouthJerseyYachtSales.com](http://SouthJerseyYachtSales.com)





## South Jersey Yacht Sales Offshore Showdown

**JULY 6-9, 2022**

**ENTRY FEE • \$1,500**

Early Entry Before June 15th • \$1,100

### SCHEDULE OF EVENTS

#### WEDNESDAY, JULY 6

##### CAPTAINS MEETING

4:00 PM

Registration & Captains Meeting at  
Cape May Brewing Company

#### THURSDAY, JULY 7

##### FISH DAY

8:00 AM – 3:30 PM | Lines In

5:00 PM - 7:30 PM

Weigh Ins, Catch Reports  
& Dockside Cocktail Service

7:30 PM - 9:00 PM

Dockside Dining & Cocktails  
at Canyon Club Resort Marina

#### FRIDAY, JULY 8

##### LAY DAY

12:00 PM – 2:00 PM

Dockside BBQ & Afternoon Events

#### SATURDAY, JULY 9

##### FISH DAY

8:00 AM – 3:30 PM | Lines In

5:00 PM - 7:30 PM

Weigh Ins, Catch Reports  
& Dockside Cocktail Service

7:30 PM - 9:00 PM

Seated Dinner & Awards  
at the Grand Hotel of Cape May

### AWARDS

#### ANGLER AWARDS

Most Points Male Angler, 16 & Over

Most Points Lady Angler, 16 & Over

Most Points Junior Male Angler, 15 & Under

Most Points Junior Female Angler, 15 & Under

Most Points Angler Blue Marlin

Most Points Angler White Marlin

Heaviest Tuna

Heaviest Dolphin

Heaviest Wahoo

#### BOAT AWARDS

Most Points Overall 1st, 2nd, 3rd

Most Points White Marlin 1st, 2nd, 3rd

Most Points Blue Marlin 1st, 2nd, 3rd

Most Points Tuna 1st, 2nd, 3rd

#### TEAM AWARDS

*(Top 5 Boats per team count towards points)*

*Viking, Ocean, Albemarle, Jupiter, Yellowfin,  
Invincible & Custom division*

##### Top Points per Team

Individual MVPs within each team will be awarded

#### POINTS FOR SCORING

White Marlin – 100 Points per Release

Blue Marlin – 300 Points per Release

Tuna – The five heaviest Tuna per boat per day  
earn 1 point per pound, 35lb minimum

*Eligible Tuna: Yellowfin, Bigeye, True Albacore*



# IF YOU'RE UNFAMILIAR WITH JUPITER, WHAT PLANET ARE YOU FROM?

REFINED. REDEFINED.

FL • US

MADE IN AMERICA



Here on Earth, if you really know your boats, you undoubtedly know us. Jupiter Marine has been individually handcrafting yacht-quality offshore sportfishing machines for over 30 years, and along the way we built a reputation just as impressive.



Authorized Dealer:  
South Jersey Yacht Sales  
609.884.1600

**JUPITER**

JUPITERMARINE.COM



# South Jersey Yacht Sales Offshore Showdown

## JULY 6-9, 2022

### TOURNAMENT RULES



#### Times & Boundaries

1. All boats must sail from and return to Cape May Inlet.
2. Boats are not permitted to clear the Sea Buoy prior to 4:30 AM.
3. Fishing begins at 8:00 AM. No lines or bait of any kind may be put into the water until starting time.
4. Fishing ends at 3:30 PM on each scheduled fishing day. Any fish hooked prior to the deadline may be played until boated or released, provided that said fish is announced hooked on the tournament channel before the deadline.
5. Boundaries for the tournament will be 100 nautical miles from the Cape May Sea Buoy.
6. Weigh-in begins at 5:00 PM. All eligible fish must be available for weigh-in by 7:30 PM aboard the boat on which they were caught.

#### Angling & Fishing

7. Participants shall comply with I.G.F.A. equipment and angling rules with the following exceptions: A) A fish may be hooked by someone other than the angler provided the rod is immediately transferred to the angler after hook-up. From that time on, the angler must fight the fish alone until boated or released; B) No Harpoons, dart gaffs, or greensticks; C) Live baiting is not permitted. The Tournament Directors retain sole authority for interpreting and implementing the I.G.F.A.'s rules.
8. There is no limit on the number of lines or teasers.
9. All billfish released are to be announced on the tournament channel at the time of the catch. Tuna boated over 50 lbs. should also be reported.
10. This is a trolling tournament. While hook-ups accomplished with no headway are permissible if they occur at a time when baits settle while fighting another fish, the use of live bait or stopping and casting or pitching to tailing fish or fish balling bait is not permissible.
11. For release purposes, a fish will be considered caught when the mate grabs the leader, or the swivel touches the rod tip.
12. Fishing will be on each scheduled day unless cancelled by the weather committee by 6:30 AM.
13. Anglers may not switch to another boat nor can anyone from another boat come aboard to assist in fighting or boating a fish.

#### Scoring & Prizes

14. Only one day need be fished for the tournament to be considered official & prizes to be awarded.
15. Fractional weights will be rounded to the nearest pound.
16. For release points to count, boats must be dockside by the weigh-in deadline and submit a Daily Catch Report by 7:30 PM at the official tournament weigh station.
17. In the event of a tie, the winner shall be the first boat or team reaching the winning point accumulation.
18. In order to be eligible for awards and prizes, fish must be caught in compliance with all tournament rules. Said rules include conformance to state and federal size limits and possession of a current NMFS angling, general or charter/headboat category HMS permit.
19. All fish eligible for cash prizes may be subject to examination by the Tournament Directors, consulting biologists and/or Torrymeter, should there be any question as to the "freshness" of the catch. It shall be the responsibility of the participant to keep all eligible catches in suitable and proper condition until weigh-in. In the event of any disputes arising from such examination, the decision of the Tournament Directors shall be final. Polygraph examination may be required of winning crews.

#### Administration

20. The designated tournament VHF radio channels are 69 (Primary) and 71 (Alternate)
21. The Tournament Directors and hosting facilities assume no liability or responsibility for any damage or loss.
22. In the event of boat disability, contestants may transfer to another boat not entered in the tournament and may fish in the name of the original, with the prior approval of the Tournament Directors.
23. Allegations of violations of any of the above rules may be submitted only by an official tournament registrant and must be submitted in writing on the day of the alleged infraction. In the event of such an allegation, the tournament directors will have the sole and exclusive responsibility to investigate the alleged incident and to rule as to whether any violation materially aided the angler, crew, or vessel, or otherwise affected the outcome of the tournament. Any subsequent penalty will be solely at the discretion of the tournament directors and shall be final. In all cases, registrant and their crews agree to be bound by the ruling of the tournament directors.



# | OUR LEGACY IS YOUR FUTURE |



#### Canyon Club Resort Marina

900 Ocean Drive  
Cape May, NJ, US, 08204  
609-884-1600

#### Arnold's Yacht Basin

1668 Beaver Dam Road  
Pt. Pleasant, NJ, US, 08742  
732-899-9666



#### South Jersey Yacht Sales & Service Center

680 Bay Ave  
Somers Point, NJ, US, 08244  
609-927-1175

#### Brielle Yacht Club

201 Union Ln  
Brielle, NJ, US, 08730  
732-899-9666





Get the  
Tournament  
App

# THE MIDATLANTIC

## AUGUST 21-26, 2022

**Tournament Entry Fee \$3,000**

The MidAtlantic has continually set the standard for big game fishing tournaments in terms of prize money, hospitality, and conservation. Now in its 31st year the MidAtlantic has truly been a one-of-a-kind experience that continues to create memories to last a lifetime for all participants. Which is why each August, boat owners, captains and crews come together from all over the world to compete in this great event! The event is staged out of two world renowned ports; Cape May, NJ, where the Canyon Club Resort Marina is the home base of the tournament and Ocean City, MD, with Sunset Marina serving as the second port's headquarters. Along with their prime locations, each port has first class accommodations and offers distinct amenities for participants to enjoy while dockside. Both locations have fully run weigh-ins simultaneously, which are broadcast via our livestream media to keep everyone informed as the excitement happens and the participants take center stage.

### SCHEDULE OF EVENTS

*Open Registration begins February 1st 2022*

*Earlier entry guarantees an official boat number for the tournament*

#### **Sunday, August 21**

1:00PM - 4:30PM • Late Registration, Calcutta Entries,

Welcome Cocktail Party

4:30PM • Captains' Meeting

Cape May - Canyon Club Resort Marina

Ocean City, MD - Sunset Marina

#### **Monday, August 22**

8:00AM - 3:30PM • Available Fish Day

#### **Tuesday, August 23**

8:00AM - 3:30PM • Available Fish Day

#### **Wednesday, August 24**

8:00AM - 3:30PM • Available Fish Day

#### **Thursday, August 25**

8:00AM - 3:30PM • Available Fish Day

#### **Friday, August 26**

8:00AM - 3:30PM • Available Fish Day

7:30PM • Dockside Dining,

Entertainment and Awards Ceremony

**Weigh-In • 5:00PM - 9:00PM at Canyon Club Marina  
and Sunset Marina on each Available Fish Day.**

*Dockside dining and entertainment schedules will be provided in detail in participants Captains Packets  
following the tournament's Registration and Captains Meeting for each port's hosting facility.*

### SPONSORS

#### PREMIER SPONSORS



#### PREMIER ENGINE SPONSORS



#### PRIMARY HOST MARINAS



#### EXHIBITING SPONSORS

Alexseal  
Bridge Group Morgan Stanley  
Bucket Brigade Brewery  
Cambria USA / Maclaren  
Canyon Club Marina

Christi Insurance  
Garmin  
Hank Sauce  
High Noon Hard Seltzer  
Huk

Humphree  
Interlux / Awlgrip  
J&T / MTU  
Krazy Salts  
Mack Boring / Scania

Mid Shore Electronics  
Premier Yacht Management  
Roffs  
Slack Tide Brewery  
South Jersey Marina

South Jersey Yacht Sales  
Sunset Marina  
United Rentals  
Viking  
Yamaha

#### SUPPORTING SPONSORS

The Billfish Foundation  
Costa Marine Canvas

Everglades Boats  
Henriques Yachts

Jersey Cape Yachts  
Lucky Bones Restaurant

Outrigger Yacht Products  
RFA

Sea Gear Outfitters  
Sturdy Savings Bank

*Interested in becoming a sponsor? Contact us at (609) 884-0177 or [Tournaments@SouthJerseyMarina.com](mailto:Tournaments@SouthJerseyMarina.com)*





# Everything you need. Plus equipment.

From safety/operator training and equipment management technologies, to custom solutions engineered to meet specialized job requirements, United Rentals offers much more than just the world's largest rental fleet. It takes a lot to get the job done right. **We're here to help.**

**UnitedRentals.com** | 800.UR.RENTS

© 2019 United Rentals, Inc.





# THE 31ST ANNUAL MEGA MARLIN CALCUTTA

**\$31,000 Entry Fee**

Heaviest White Marlin = 32% | 2nd = 18%

Heaviest Blue Marlin = 32% | 2nd = 18%

Benefitting



## In the Event that:

- 1 Less than two qualifying fish are taken in any category, the unwon prize money will be proportionately divided among the winners in that category.
- 2 No qualifying fish is taken in any category, the unwon prize money will be equally divided among the winners of the other categories.
- 3 No qualifying fish are caught, the unwon prize money will be refunded.

## OVERALL CALCUTTAS

**Everglades**

**50' and Under Overall Calcutta: \$2,000 Entry Fee**

Think the bigger boats have an advantage?

To enter the 50' and Under Calcutta, boats must be 50' or less in length according to the given boat's model name.

IE: A Viking 50 Convertible will be considered a 50' boat even though its LOA is 50' 6".



**United Rentals**

**Home Port  
Overall Calcutta  
\$4,000 Entry Fee**

**In Deep Overall Calcutta  
\$6,000 Entry Fee**

**MidAtlantic  
Overall Calcutta  
\$3,000 Entry Fee**

Each of the above four Overall Calcuttas will be shared as follows:

Heaviest White Marlin = 20% | 2nd = 10% | 3rd = 5%

Heaviest Blue Marlin = 15% | 2nd = 10% | 3rd = 5%

Heaviest Tuna = 15% | 2nd = 10% | 3rd = 5%

Heaviest Wahoo - 2.5% • Heaviest Dolphin - 2.5%

## In the Event that: (pertains to the four Overall Calcuttas)

- 1 Less than three qualifying fish are taken in any category, the unwon prize money will be proportionately divided among the winners in that category.
- 2 No qualifying white marlin is taken, the unwon prize money will be equally divided among the winners of the blue marlin category.
- 3 No qualifying blue marlin is taken, the unwon prize money will be equally divided among the winners in the white marlin category.
- 4 No qualifying white or blue marlin is taken, the unwon prize money will be equally divided among the winners in the tuna category.
- 5 No qualifying tuna is taken, the unwon prize money will be equally divided among the winners in the marlin categories.
- 6 No qualifying billfish or tuna is taken, the unwon prize money will be equally divided among the Dolphin and Wahoo categories.
- 7 No Dolphin is taken the unwon prize money will be go to the Heaviest Wahoo and vice versa.
- 8 No Dolphin or Wahoo are taken, the unwon prize money will be divided among the tuna categories.



## In the Event:

- 1 Of a tie, the winner shall be the boat first reaching the winning point accumulation in that port.
- 2 That a category is not won, the unwon prize money will be equally divided among the other winners in that port.

## BILLFISH POINTS CALCUTTA

**\$1,000 Entry Fee** (For Billfish Points only) Port specific

Most Points Billfish = 50% 2nd = 30% | 3rd = 20%

**Huk**

**ROFFS**

**White Marlin Pro Jackpot  
\$5,000 Entry Fee**

## THE PRO JACKPOTS

Heaviest fish in each category takes all!

**Blue Marlin Pro Jackpot  
\$3,000 Entry Fee**

**Tuna Pro Jackpot  
\$3,000 Entry Fee**

**In the Event:** No qualifying fish is taken in a Pro Jackpot Calcutta, the unwon prize money will be rolled over and added to the prize money for that Calcutta in the following year. To compete for the following year's prize, teams will be required to pay to reenter the Calcutta.



## TUNA, DOLPHIN AND WAHOO CALCUTTA

**\$2,500 Entry Fee**

Heaviest Tuna - 25%  
2nd Heaviest Tuna - 15%  
3rd Heaviest Tuna - 10%

Heaviest Dolphin - 13%  
2nd Heaviest Dolphin - 8%  
3rd Heaviest Dolphin - 4%

Heaviest Wahoo - 13%  
2nd Heaviest Wahoo - 8%  
3rd Heaviest Wahoo - 4%

## In the Event that:

- 1 Less than three qualifying fish are taken in any category, the unwon prize money will be proportionately divided among the winners in that category.
- 2 No qualifying fish is taken in any category, the unwon prize money will be equally divided among the winners of the other categories.



## ON THE BOARD REWARD

**\$2,000 Entry Fee**

This Calcutta pays out each time you have a fish on the scoreboard in the following categories at the official close of each day's weigh-in:

**Heaviest White Marlin, 2nd and 3rd • Heaviest Blue Marlin, 2nd and 3rd • Heaviest Tuna, 2nd and 3rd**

The total purse will be divided by 5 (5 days). Each day's purse will be split evenly among those winning for that day. If there are no winners for a particular day, the un-won prize money will be split evenly among the purses of the remaining days. In the event that there are no winners on the last day (Friday), the unwon prize money will be evenly split among the previous 4 days' winners. If there are no winners for the entire week, the money will be refunded. **Example:** Let's say the total purse for the On the Board Reward is \$200,000. That figure would be divided by 5 (5 days) giving each day a purse of \$40,000. Those who are in this Calcutta and remain on the board at the end of each day's weigh-in will evenly split the purse for that day. If there is only one winner, they would take the entire \$40,000. Two winners would get \$20,000 each and so on.



THE FINEST  
*Sportfishermen*  
IN THE WORLD call Canyon Club Home...

**Y O U   S H O U L D   T O O !**

After one walk along Canyon Club's docks during a summer's evening, you'll be sure to see that we're much more than just another marina in Southern New Jersey. Canyon Club Resort Marina is home to the best Sportfishermen, captains and mates along the eastern seaboard.

Boat after boat is busy rigging baits, spooling reels, filling ice and fueling boats...  
Getting ready for the next day's offshore adventure.

Dock parties and shared fishing tales create a melting pot of knowledge among crews and foster camaraderie at sea. We welcome you to visit us at Canyon Club.

*Take a walk along the docks... and become part of our fishing family.*



Limited Slip Availability for 2022 - Call Now

**Canyon Club**  
RESORT MARINA

900 OCEAN DRIVE | CAPE MAY, NJ 08204 | 609-884-0199 | CanyonClubMarina.com

# HIGH BOAT AWARDS

Custom trophies will be awarded to the winners of the following categories:

## Most Points Overall

(Both Marlin & Tuna Points Qualify)

**1st | 2nd | 3rd Most Points White Marlin**

**1st | 2nd | 3rd Most Points Blue Marlin**

**1st | 2nd | 3rd Most Points Tuna**

# POINTSCORING SYSTEM

Awarded to qualifying fish as follows:

## White Marlin

75 points per release | 1 point per pound weighed

## Blue Marlin

150 points per release | 1/4 point per pound weighed

## Tuna

1/2 point per pound weighed

# QUALIFYING FISH

The minimum measurements for qualifying fish in The MidAtlantic are as follows:

**Dolphin & Wahoo - 20 Pounds**

**Tuna - 50 Pounds**

*Eligible species in the tuna category are*

*Yellowfin (Allison), Big Eye, and Albacore (Longfin).*

**White Marlin - 69 Inches AND 65 Pounds**

**Blue Marlin - 102 Inches AND 400 Pounds**

*Billfish are measured curved from the tip of the lower jaw to the fork of the tail.*

Fish which do not meet the tournament minimums will not be eligible for prizes, regardless of weight. It is the responsibility of the angler to be aware of current Federal and/or State regulations regarding the catching and/or boating of the various species of fish eligible in this tournament. Under no circumstances may a fish not meeting the Federal and/or State minimum size limits, regardless of weight, be boated and/or brought back to the dock. South Jersey Tournaments will not be responsible for any fine or penalty incurred by any angler who boats a fish which does not meet the Federal and/or State size limit requirements or other restrictions.

# TOURNAMENT RULES

## TIMES & BOUNDARIES

1. Each registrant must designate their choice of Official Inlets; Cape May, NJ or Ocean City, MD. Boats must sail from and return to their designated inlet. All boats must return to their designated port for weigh-in. Entries per port may be limited. Canyon Club Resort Marina is the official weigh-in location for Cape May, NJ. Sunset Marina is the official weigh-in location for Ocean City, MD.
2. Boats are not permitted to clear the sea buoy at their designated inlet prior to 3:00 AM.
3. Fishing begins at 8:00 AM. No lines or bait of any kind may be put into the water until starting time.
4. Fishing ends at 3:30 PM on each scheduled fishing day. Any fish hooked prior to the deadline may be played until boated or released, provided that said fish is announced hooked on the tournament channel before the deadline.
5. Boundaries for the tournament will be 125 nautical miles from the Cape May Sea Buoy.
6. Weigh-in begins at 5:00 PM. All eligible fish must be available for weigh-in by 9:00 PM aboard the boat on which they were caught.
7. Each boat must pick two NON-FISHING DAYS by submitting the official Lay Day Form prior to 11:00 AM on the days selected. Said forms must be physically delivered to the dockmaster's office at one of the Host Marinas. Boats must be dockside at 11:00AM on Lay Days. Boats may not fish on lay days unless all of their available fish days have been used. Boats with mechanical problems or other emergencies may use lay days to arrive late to the tournament so long as it is with the advance permission of the Tournament Directors and they conform with all other rules.

## ANGLING/FISHING

8. Participants shall comply with I.G.F.A. equipment and angling rules with the following exceptions: A) A fish may be hooked by someone other than the angler provided the rod is immediately transferred to the angler after hook-up. From that time on, the angler must fight the fish alone until boated or released; B) No harpoons, dart gaffs or greensticks. C) Live baiting is not permitted. The Tournament Directors retain sole authority for interpreting and implementing the I.G.F.A.'s rules.
9. There is no limit on the number of lines or teasers.
10. All billfish boated or released are to be announced on the tournament channel at the time of the catch. Tuna over 100 lbs. should also be reported.
11. This is a trolling tournament. While hook-ups accomplished with no headway are permissible if they occur at a time when baits settle while fighting another fish, the use of live bait or stopping and casting or pitching to trailing fish or fish balling bait is not permissible. Live baiting shall include live teasing and fishing for bait during the tournament. The use of Chub Mackerel or Atlantic Mackerel is prohibited.
12. For release purposes, a fish will be considered caught when the mate grabs the leader or the swivel touches the tip of the rod.
13. There are 5 available fishing days for the tournament. Fishing days for boats entered will be any 3 of the available 5 days, captains' choice; no weather committee. The crew members of each individual boat will be solely responsible for the decision as to which days to fish.
14. Anglers may not switch to another boat nor can anyone from another boat come aboard to assist in fighting or boating a fish.

## SCORING/PRIZES

15. Only one day need be fished for the tournament to be considered official & prizes to be awarded.
16. Weights will be rounded to the nearest pound. Billfish are measured curved from the tip of the lower jaw to the fork of the tail.
17. For release points to count, boats must be dockside by the weigh-in deadline and submit a Daily Catch report by 9:00 PM at the weigh station of one of the host marinas. Any catch report received after the deadline will lose 1/2 of its total value.
18. In the event of a tie in the point categories, the winner shall be the first boat reaching the winning point accumulation.
19. In the event of a tie in the cash prize categories, the prize money will be equally divided among those tying.
20. For the purpose of release points identification only, sailfish & longbill spearfish will be considered white marlin. For all purposes of identification, Roundscale Spearfish will be considered white marlin.
21. In order to be eligible for awards and calcuttas, fish must be caught in compliance with all tournament rules. Said rules include conformance to state and federal size limits and possession of a current NMFS angling, general or charter/headboat category HMS permit.
22. All fish eligible for cash prizes may be subject to examination by the Tournament Directors, consulting biologists and/or Torrymeter, should there be any question as to the "freshness" or natural state of the catch. It shall be the responsibility of the participant to keep all eligible catches in suitable and proper condition until weigh-in. In the event of any disputes arising from such examination, the decision of the Tournament Directors shall be final. Polygraph examination may be required of winning crews.

## ADMINISTRATION

23. The designated tournament VHF radio channels are 69 (Primary) and 71 (Alternate).
24. Registration is by boat rather than by angler. The Tournament Directors reserve the right to decline the entry of any boat or crew.
25. The Tournament Directors and hosting facilities assume no liability or responsibility for any damage or loss.
26. In the event of boat disability, contestants may transfer to another boat not entered in the tournament and may fish in the name of the original, with prior approval of the Tournament Directors.
27. Allegations of violations of any of the above rules may be submitted only by an official tournament registrant and must be submitted in writing on the day of the alleged infraction. In the event of such an allegation, the tournament directors will have the sole and exclusive responsibility to investigate the alleged incident and to rule as to whether any violation materially aided the angler, crew, or vessel, or otherwise affected the outcome of the tournament. Any subsequent penalty will be solely at the discretion of the tournament directors and shall be final. In all cases, registrant and their crews agree to be bound by the ruling of the tournament directors.



# Protection without limits



There's nothing like the freedom of being on the water, but protecting your boat – and choosing the best product to protect it with – can be a drag.

With Micron® Extra SPC, the choice is easy. Its unique Self Polishing Copolymer technology constantly protects against fouling, even when your boat is docked, offering unrivaled, multi-season protection in all waters. Typically reserved for super yachts, this technology is now available for boats coast to coast and for all types of users.

Choose Micron® Extra SPC to enjoy your time on the water, wherever you go!

Relentless performance for every boat,  
everywhere, every time



[interlux.com](http://interlux.com)

AkzoNobel

# Broken Record - 2021 MidAtlantic Recap

*...when a new, tournament-record, 958 pound Blue Marlin just wasn't enough!*

Celebrating 30 years of competition, opportunity, and camaraderie, the 2021 MidAtlantic saw a record field of 203 boats gather in Cape May, New Jersey and Ocean City, Maryland and battle out for a record total cash purse of \$5,929,050! Those who have been around the event are familiar with the storied history of final day shake-ups, highs and lows that typically take place during tournament as last minute changes to the standings have become the norm. Fortunes are often won and lost and crews who think they're in a safe position on the leaderboard often have a sleepless night before Day Five as last-minute weigh-ins can cause a lot of uneasiness as the tournament comes to a close. However, the final day of the 2021 MidAtlantic will be relived for a long time as a major category in the event saw its tournament record broken for the second time in just two days!

Day Five got off to a wet start as offshore conditions saw crews dodging rain squalls and showers for most of the day. On the final day of the tournament 176 boats had Day Five available to fish and while some of the categories may have seemed out of reach, there is always that chance because it only takes one bite! Going into the final day of competition the white marlin and tuna categories each had respectable fish in the top two places on the leaderboard. Everyone knew the white marlin of 82 and 80 pounds and the tuna of 235 and 227 pounds would be tough to beat but not out of the question. The



Rocky Hardison's *Wolverine* weighed the first blue marlin over 900 pounds in the MidAtlantic's 30 year history. His then-tournament record 958-pounder finished in second place and won the crew \$198,716.

blue marlin category was an entirely different story as the then-tournament record 958 pounder weighed by Rocky Hardison of Beaufort, North Carolina aboard his *Wolverine* on Day Three had many thinking Hardison and his crew could take the rest of the week off and try their luck in a casino or horse track. But then again, this was Day Five at the MidAtlantic, Moving Day as it has become known to way too many, where dreams are realized and shattered by the tip of the scale!

The weigh-in session on Day Five got off to an early start and caused quite a stir as Jon Duffie's *Billfisher* of Ocean City, Maryland was already waiting at the scale at 5 p.m. when the evening's weigh-in got underway. A huge crowd had already gathered as word of a big blue marlin in the cockpit of *Billfisher* had spread earlier in the day. Duffie himself was tight-lipped about how big the blue marlin actually was; however, few were prepared for what they saw stretched out aboard the *Billfisher*. When asked about the battle, angler Billy Gurlach recalled he'd fought the big blue marlin for 3½ hours on an 80-pound outfit while Duffie noted they had the leader in hand and the fish close but slightly out of reach over two dozen times before they could sink the gaff. At the scale, the tail of the marlin hung through the transom door of *Billfisher* while the crew waited for the fish to be weighed. After much discussion by the crew of *Billfisher* and tournament staff it was agreed that a skiff would be utilized to pull the huge marlin out through the transom door in order to raise her to the scale. Once on the dock Weighmaster Frank Ingram, assisted by other tournament staff, stretched the measuring tape and noted the length of the marlin at 136½", and while only 1½" longer than the 958-pounder caught



On Day Five the crew of Jonathon Duffie's *Billfisher* had plenty to smile about as their 1135-pound blue marlin set not only a MidAtlantic tournament record but has also since qualified as a Maryland state record as well. In addition, the crew walked off with a tournament record payout of \$1,167,762!

aboard *Wolverine*, the girth measured 80" which had many in the crowd speculating this one may be a grander. Eight dock attendants struggled to lift the marlin to the scale where Ingram was finally able to slip the tail rope onto the scale's hook. Several adjustments were made to be certain the fish was hanging freely and after allowing the fish to settle on the scale its weight of 1135 pounds was announced to the crowd! At 1135 pounds the big blue marlin was not only a new tournament record and has since been verified and approved as the new Maryland state record breaking the previous record of 1,062 set in 2009 by Robert Ferris.

The record-setting blue marlin would go on to win the blue marlin category for *Billfisher* and was good for a cash payout of \$1,167,762! Rocky Hardison of Beaufort, North Carolina finished in second place aboard

*see Recap on pg 33*





*World Class*  
Resort | Fishing | Service

204 Surge Free Slips | Direct Access to Atlantic | In-Slip Fuel | Two Spacious Pools | Gameroom  
Working Boatyard | 88 Ton Travel Lift | Sunset Provisions and Atlantic Tackle On-Site | Free Wifi  
24/7 Fitness Center | Home of the Sunset Grille | 400 Indoor Boat Storage Racks | Gas Dock | Diesel Dock

Sunset Marina - 12911 Sunset Avenue, Ocean City, MD 21842 - 410.213.9600 - 877.514.FISH

[www.OcSunsetMarina.com](http://www.OcSunsetMarina.com)







Anthony Martina's *Sea Wolf* earned a tournament record payout of \$1,017,127 for his 82-pound white marlin weighed on Day Two.

**Wolverine** with the 958-pounder he caught on Day Three and won \$198,716 while the late Larry Hesse's *Goin' in Deep* from Manasquan, New Jersey finished in third place and their 681-pounder caught on Day One was worth \$412,237. It's important to note prize money awarded in all categories at the MidAtlantic varies by the level of numerous tournament sanctioned calcuttas the participant enters.

The white marlin category didn't have the last-minute drama of the blue marlin and the standings remained unchanged after Day Five. Anthony Martina's *Sea Wolf* out of Middletown, Delaware won the heaviest prize for the category and received \$1,017,127 for his 82-pounder weighed on Day Two. Art Boykin's *Berlin*, Maryland-based **Lucky Duck II** took second place honors with his 80-pounder which he weighed on Day One and received \$162,604. Andrew Dotterweich of Jupiter, Florida wheeled the **Fish On** to a third-place win and received \$680,387 for his 75-pounder.

The tuna division was hotly contested during the tournament and two dozen big eyes weighed as well as dozens of yellowfins including one of the largest yellowfins weighed in the history of the tournament, a 172-pounder angler Nicole Scotti landed aboard Gina Addeo's **Gina Lisa** from Staten Island, New York. However, the big eyes took all the big money in the category lead by Chip Caruso from Colts Neck, New Jersey aboard his **Pipe Dreamer** that took the top two places with big eyes of 235 and 227 pounds weighed on Day Three which were worth a total of \$1,000,065! Summit, New Jersey's Bob Hugin aboard his **The Right Place** finished in third place with a 188-pounder

weighed on Day One and received \$244,556.

The dolphin category saw a big change on Day Five and all three places were changed. as all three places changed led by Danny Veid's **Amarula Sun** from Tarpon Springs, Florida who won the category and received \$98,441 for his 45-pounder. Second place went to Tinton Falls, New Jersey's Ken Hager aboard **Taylor Jean** with a 36-pounder which netted him \$36,707. Randy Gibbs' **Picasso Moon** based in Houston, Texas finished in third place and won \$16,826 for a 33-pounder.

In the wahoo division Tom Perry of Pasadena, Maryland aboard his **Just One More** weighed a 58-pounder on Day Five to take the top prize of \$63,614 followed in second place by **Amarula Sun** with a 57-pounder that was good for \$68,614. Kevin Moore's Pasadena, Maryland-based **Reel Moore** finished in third place and received \$3,055 for the 50-pounder he caught on Day Four.

Known for a variety of 11 calcuttas and a prize structure that's designed for spreading the wealth to multiple winners, this year's MidAtlantic saw record payouts for the heaviest white marlin and blue marlin as well as a combined record payout for the top two tuna as each received well over \$1 million! In addition to the three \$1 million payouts, six other participants received checks of \$100,000 or more and five more received checks of \$50,000 or more. Additionally, a record for tuna points was set by Bob Hugin's **The Right Place**.



For the second consecutive year two large big eye tuna aboard the same boat scored a big payday. Chip Caruso's *Pipe Dreamer* nabbed a check totaling \$1,000,065 after weighing big eyes of 235 and 227 pounds on Day Three to take first and second in the category.

see Recap on pg 35



# SOUTH JERSEY MARINA

*Cape May's Most Convenient Transient Facility*



*Photo courtesy of motor yacht Vivere*

With a fully stocked ship's store, an extensive selection of men & women's clothing and accessories, and our Saltwater Café with dockside seating, we'll be certain to have all your needs right onsite. We also have complimentary shuttle services to get you into the historic city of Cape May. In town you will find everything from fine dining, seaside shopping, to some of the best beaches New Jersey has to offer!



*It doesn't matter if you're stopping for fuel, laying overnight during your coastal transit, or taking a few days for some R & R, we'll accommodate you with concierge-like service while at our facility. Once you're here, you'll truly understand why!*

**South Jersey Marina**

1231 Route 109 | Cape May, NJ 08204 | (609) 884-2400 | [www.SouthJerseyMarina.com](http://www.SouthJerseyMarina.com)

## CASH PRIZE WINNERS

\* As noted above, cash payout differences vary by level of calcutta participation.

### WHITE MARLIN

82 lbs. | **SEA WOLF** | Anthony Martina | Middletown, DE | **\$1,017,127**  
80 lbs. | **LUCKY DUCK II** | Art Boykin | Berlin, MD | **\$162,604**  
75 lbs. | **FISH ON** | Andrew Dotterweich | Jupiter, FL | **\$680,387**  
69 lbs. | **C BOYS** | Luke Blume | Berlin, MD | **\$48,598**  
68 lbs. | **ROSHAMBO** | Nick Shriver | Leonardtown, MD | **\$292,152**  
68 lbs. | **LUNATICO ON EFFE MAE** | Lance Converse  
West Palm Beach, FL | **\$7,896**

### TUNA

235 lbs. | **PIPE DREAMER** | Chip Caruso | Colts Neck, NJ | **\$738,252**  
227 lbs. | **PIPE DREAMER** | Chip Caruso | Colts Neck, NJ | **\$261,813**  
188 lbs. | **THE RIGHT PLACE** | Bob Hugin | Summit, NJ | **\$244,556**  
185 lbs. | **SLIM SHADY** | John Arceri | Mineola, NY | **\$98,104**  
184 lbs. | **ENDORFIN** | Jere Murdoch | Howell, NJ | **\$79,398**  
182 lbs. | **WARDEN PASS** | Val Fichera | Cape May, NJ | **\$8,883**  
182 lbs. | **INTERNAL FIXATION** | Marshall Allegra | Rumson, NJ | **\$6,110**  
179 lbs. | **TAYLOR JEAN** | Ken Hager | Tinton Falls, NJ | **\$34,639**  
175 lbs. | **THE RIGHT PLACE** | Bob Hugin | Summit NJ | **\$7,896**

### BLUE MARLIN

1135 lbs. | **BILLFISHER** | Jon Duffie | Ocean City, MD | **\$1,167,762**  
958 lbs. | **WOLVERINE** | Rocky Hardison | Beaufort, NC | **\$198,716**  
681 lbs. | **GOIN' IN DEEP** | Larry Hesse | Manasquan, NJ | **\$412,237**  
487 lbs. | **REEL TIGHT** | Steven Pilipauskis | Riva, MD | **\$32,571**  
472 lbs. | **THE ZIPPER** | Eddie Zajdel | Ocean City, MD | **\$36,660**

### DOLPHIN

45 lbs. | **AMARULA SUN** | Danny Veid | Tarpon Springs, FL | **\$98,441**  
36 lbs. | **TAYLOR JEAN** | Ken Hager | Tinton Falls, NJ | **\$36,707**  
33 lbs. | **PICASSO MOON** | Randy Gibbs | Houston, TX | **\$16,826**  
26 lbs. | **RISKY BUSINESS** | Daniel McCarthy | Avalon, NJ | **\$6,298**

### WAHOO

58 lbs. | **JUST ONE MORE** | Tom Perry | Pasadena, MD | **\$63,614**  
57 lbs. | **AMARULA SUN** | Danny Veid | Tarpon Springs, FL | **\$68,479**  
50 lbs. | **REEL MOORE** | Kevin Moore | Pasadena, MD | **\$3,055**  
32 lbs. | **MACK 900** | Patrick McGovern | Somerset, NJ | **\$23,124**

### HUK BILLFISH POINTS CALCUTTA | CAPE MAY

Most Points | 1575 | **VIKING 80** | Pat Healey | New Gretna, NJ | **\$12,220**  
2nd Most Points | 1050 | **KRAZY SALTS** | Dave Anderson | West Palm Beach, FL | **\$7,332**  
3rd Most Points | 1050 | **CANYON LADY** | Jamie Diller | Stone Harbor, NJ | **\$4,888**

\* Point ties broken based on time of catch

### ATLANTIC TACKLE BILLFISH POINTS CALCUTTA | OCEAN CITY

Most Points | 1275 | **MAX BET** | Matt Weber | Vero Beach, FL | **\$25,850**  
2nd Most Points | 1275 | **BLOOD MONEY** | William Keller | Brielle, NJ | **\$15,510**  
3rd Most Points | 1200 | **BIG STICK** | David Bowen | Suwanee, GA | **\$10,340**

\* Point ties broken based on time of catch

### POINT WINNERS (TROPHIES)

1st MP White | 1575 | **VIKING 80** | Pat Healey | New Gretna, NJ  
2nd MP White | 1200 | **BIG STICK** | David Bowen | Suwanee, GA  
3rd MP White | 1125 | **BLOOD MONEY** | William Keller | Brielle, NJ  
1st MP Blue | 450 | **ROLL GROOVE** | Darren Helwig | Owings, MD  
2nd MP Blue | 418 | **THE ZIPPER** | Eddie Zajdel | Ocean City, MD  
3rd MP Blue | 389.5 | **WOLVERINE** | Rocky Hardison | Beaufort, NC

1st MP Tuna | 626 | **THE RIGHT PLACE** | Bob Hugin | Summit, NJ  
2nd MP Tuna | 231 | **PIPE DREAMER** | Chip Caruso | Colts Neck, NJ  
3rd MP Tuna | 122.5 | **INTERNAL FIXATION** | Marshall Allegra  
Rumson, NJ  
1st MP Overall | 1575 | **VIKING 80** | Pat Healey | New Gretna, NJ

### CATCH REPORT

White Marlin Released | 475  
White Marlin Weighed | 16

Blue Marlin Released | 43  
Blue Marlin Weighed | 9

Tuna Weighed | 83  
Dolphin Weighed | 42

Wahoo Weighed | 7

*For further information contact Tournament Director Aaron Hoffman at 609-884-0177. Be sure to check out the South Jersey Tournaments App which is available free for IOS or Android devices from the Apple App and Google Play stores. Be sure to visit the tournament's official web site at [www.themidatlantic.com](http://www.themidatlantic.com) where you'll find all the facts, figures and information about the 2022 MidAtlantic tournament including a tournament schedule, calcutta information, tournament rules and other details. On social media follow the MidAtlantic on Facebook at The MidAtlantic Tournament; on Twitter; @midatl and on Instagram; @themidatlantictournament.*





*The Bridge Group at Morgan Stanley is proud to support*

## The 31st Anniversary of The MidAtlantic



L-R: Ryan Leek, Joe Dugan

**Joe Dugan, CPM®**  
Portfolio Management Director  
Senior Vice President  
Financial Advisor  
609-383-2030  
[joseph.dugan@morganstanley.com](mailto:joseph.dugan@morganstanley.com)

1601 New Road, Suite 101  
Northfield, NJ 08225  
877-612-5929  
[fa.morganstanley.com/thebridgegroup](http://fa.morganstanley.com/thebridgegroup)

**Ryan M. Leek**  
Portfolio Manager  
Associate Vice President  
Financial Advisor  
609-383-2020  
[ryan.leek@morganstanley.com](mailto:ryan.leek@morganstanley.com)

**Deb Cline**  
Senior Client Service Associate  
609-383-2026  
[deb.cline@morganstanley.com](mailto:deb.cline@morganstanley.com)

# 2022 IGFA Rules



The following angling rules have been formulated by The International Game Fish Association to promote ethical and sporting angling practices, to establish uniform regulations for the compilation of world game fish records, and to provide basic angling guidelines for use in fishing tournaments and any other group angling activities.

The word "angling" is defined as catching or attempting to catch fish with a rod, reel, line, and hook as outlined in the IGFA International Angling Rules. There are some aspects of angling that cannot be controlled through rule making, however. Angling regulations cannot insure an outstanding performance from each fish, and world records cannot indicate the amount of difficulty in catching the fish. Captures in which the fish has not fought or has not had a chance to fight do not reflect credit on the fisherman, and only the angler can properly evaluate the degree of achievement in establishing the record.

Only fish caught in accordance with IGFA International Angling Rules, and within the intent of these rules, will be considered for world records. Following are the rules for freshwater and saltwater fishing and a separate set of rules for All-Tackle Length and fly fishing. Fish caught in violation of laws or regulations governing the species or waters are not eligible for an IGFA World Record.

## **RULES FOR FISHING IN FRESH AND SALT WATER**

### **Equipment Regulations**

#### **A. LINE & BACKING**

1. Monofilament, multifilament, and lead core multifilament lines may be used. For line classes, see World Record Requirements.
2. Wire lines are prohibited.
3. Backing is permitted.
4. The catch shall be classified under the breaking strength of the first 5 meters (16.5 feet) of line directly preceding the double line, leader, or hook. This section must be comprised of a single, homogenous piece of line and may not exceed 60 kilogram (130 pound) line class.

#### **B. DOUBLE LINE**

If a double line is used, it must meet the following specifications:

1. A double line must consist of the actual line used to catch the fish.
2. Double lines are measured from the start of the knot, braid, roll or splice making the double line to the farthestmost end of the knot, splice, snap, swivel or other device used for securing the trace, leader, lure or hook to the double line.

Saltwater species: In all line classes up to and including 10 kilograms (20 pounds), the double line shall be limited to 4.57 meters (15 feet). The combined length of the double line and leader shall not exceed 6.1 meters (20 feet).

The double line on all classes of tackle over 10 kilograms (20 pounds) shall be limited to 9.14 meters (30 feet). The combined length of the double line and leader shall not exceed 12.19 meters (40 feet).

Freshwater species: The double line on all classes of tackle shall not exceed 1.82 meters (6 feet). The combined length of the double line and the leader shall not exceed 3.04 meters (10 feet).

#### **C. LEADER**

If a leader is used, it must meet the following specifications:

The length of the leader is the overall length including any lure, hook arrangement or other device, and is measured to the bend of the last hook. The leader must be connected to the line with a snap, knot, splice, swivel or other device. Holding devices are prohibited. There are no regulations regarding the material or strength of the leader.

Saltwater species: In all line classes up to and including 10 kilograms (20 pounds), the leader shall be limited to 4.57 meters (15 feet). The combined length of the double line and leader shall not exceed 6.1 meters (20 feet).

The leader on all classes of tackle over 10 kilograms (20 pounds) shall be limited to 9.14 meters (30 feet). The combined length of the double line and leader shall be limited to 12.19 meters (40 feet).

Freshwater species: The leader on all classes of tackle shall be limited to 1.82 meters (6 feet). The combined length of the double line and leader shall not exceed 3.04 meters (10 feet).

#### **D. ROD**

1. Rods must comply with sporting ethics and customs. Considerable latitude is allowed in the choice of a rod, but rods giving the angler an unfair advantage will be disqualified. This rule is intended to eliminate the use of unconventional rods.
2. The rod tip must be a minimum of 101.6 centimeters (40 inches) in length. The rod butt cannot exceed 68.58 centimeters (27 inches) in length. These measurements must be made from a point directly beneath the center of the reel. A curved butt is measured in a straight line. When the rod butt is placed in a gimbal, the measurement from the center of the reel seat to the pivot point of the gimbal can be no more than 68.58 centimeters (27 inches). (The above measurements do not apply to surfcasting rods.)

*see IGFA on pg 39*



# Celebrating a Century of Service!



**Proud Supporter of South Jersey Tournaments**



**sturdyonline.com**  
**609-463-5220**

Member  
**FDIC**



## E. REEL

1. Reels must comply with sporting ethics and customs.
2. Power- driven reels are acceptable under the following situation and configuration.
  - a) Reels that have power accessories (e.g., electric drill attachments, motors or other power accessories specifically designed for a reel) that can be physically removed from the reel may be used strictly for the purpose of retrieving a deployed bait or lure at depth all the way to the boat.
  - b) Power accessories may only be used to retrieve a bait or lure completely to the boat and are not permitted for adjusting the position of a bait or lure in the water column. Once a power accessory is attached to the reel, the bait or lure may no longer be legally used to catch a fish and the bait or lure must be retrieved all the way to the boat for manual redeployment before it may be legally used to hook or catch a fish. Power accessories may not be attached to the reel during the deployment of a bait or lure.
  - c) Power accessories must be physically removed from the reel before the act of or hooking or fighting a fish. Any fish that strikes a bait or lure being fished with a reel with power accessories still attached- whether or not under electric operation- will not be eligible for record consideration.
  - d) Electric reels that do not have removable electronic components that allow them to be completely manually driven are prohibited.
3. Ratchet handle reels are prohibited.
4. Reels designed to be cranked with both hands at the same time are prohibited.

## F. HOOKS AND BAIT FISHING

1. For live or dead bait fishing, no more than two single hooks may be used. Both must be firmly imbedded in or securely attached to the bait. The eyes of the hooks must be no less than a hook's length (the length of the largest hook used) apart and no more than 45.72 centimeters (18 inches) apart. The only exception is that the point of one hook may be passed through the eye of the other hook. A hook may not precede bait, lure or bait/lure combo by more than one hook's length.
2. The use of a dangling or swinging hook is prohibited. Double or treble hooks are prohibited.
3. A two hook rig for bottom fishing is acceptable if it consists of two single hooks on separate leaders or drops. Both hooks must be imbedded in the respective baits and separated sufficiently so that a fish caught on one hook cannot be foul hooked by the other.
4. A photograph or sketch of the hook arrangement must accompany all record applications made for fish caught on two-hook tackle.

## G. HOOKS AND LURES

1. When using an artificial lure with a skirt or trailing material, no more than two single hooks may be attached to the line, leader, or trace. The hooks need not be attached separately. The eyes of the hooks must be no less than an overall hook's length (the overall length of the largest hook used) apart and no more than 30.48 centimeters (12 inches) apart. The only exception is that the point of one hook may be passed through the eye of the other hook. The trailing hook may not extend more than a hook's length beyond the skirt of the

lure. A hook may not precede bait, lure or bait/lure combo by more than one hook's length. A photograph or sketch showing the hook arrangement must accompany a record application.

2. Gang hooks are permitted when attached to plugs and other artificial lures that are specifically designed for this use. Gang hooks must be free swinging and shall be limited to a maximum of three hooks (single, double, or treble, or a combination of any three). It is permissible to imbed or securely attach a gang hook to a lure provided that the hook becomes free swinging once the fish takes the lure. Gang hooks may not be used with live or dead baits. A photograph or sketch of the plug or lure should be submitted with record applications.
3. Assist hooks or other such single hooks that are attached to a lure with a lead constructed of monofilament, multifilament, wire or other such material must conform to the following: When using assist hooks on any artificial lure, other than a skirted lure, the lead cannot be more than 1 ½ hook's length and the bend of the hook may not be more than 10.1 centimeters (4 inches), whichever is less, from the closest point of attachment on the lure. Double and treble hooks may not be used as assist hooks.
4. Only one lure containing hooks may be used at a time.

## H. OTHER EQUIPMENT

1. Fighting chairs may not have any mechanically propelled devices that aid the angler in fighting a fish.
2. Gimbals must be free swinging, which includes gimbals that swing in a vertical plane only. Any gimbal that allows the angler to reduce strain or to rest while fighting the fish is prohibited.
3. Gaffs (including flying gaffs) and nets used to boat or land a fish must not exceed 2.44 meters (8 feet) in overall length. In using a flying or detachable gaff, the rope may not exceed 9.14 meters (30 feet). The gaff rope must be measured from the point where it is secured to the detachable head to the other end. Only the effective length will be considered. If a fixed head gaff is used, the same limitations shall apply and the gaff rope shall be measured from the same location on the gaff hook. Only a single hook is permitted on any gaff. Harpoons or lances are prohibited. Tail ropes are limited to 9.14 meters (30 feet). When fishing from a bridge, pier, or other high platform or structure, this length limitation does not apply.
4. Entangling devices, either with or without a hook, are prohibited and may not be used for any purpose including baiting, hooking, fighting, or landing the fish.
5. Outriggers, downriggers, spreader bars and kites are permitted to be used provided that the actual fishing line is attached to the snap or other release device, either directly or with some other material. The leader or double line may not be connected to the release mechanism either directly or with the use of a connecting device. Spreader bars are also acceptable when used strictly as a teaser.
6. Daisy chains, birds, floats and similar devices may only be used if they do not unfairly hamper or inhibit the normal swimming or fighting ability of the fish, thereby giving the angler or crew an unfair advantage in fighting, landing or boating the fish.
7. A safety line may be attached to the rod, reel or harness provided that it does not in any way assist the angler in fighting the fish.





# SOLACE

SUPERIOR FISHING // SUPERIOR LUXURY



Imagine reaching the canyon with the speed and performance you desire but using less power to do so. Solace just made that dream a reality. With its all-new twin stepped, Carbon Ineggra and epoxy infused hull design, the 41CS is outperforming what was once considered to be its competition. More importantly, it is doing so at a level of class, comfort, and style that is unparalleled. With more fishing features packed into 41 feet than any other boat, the Solace 41CS is your winner..

*Go further, stay longer, discover SOLACE Boats*



(386) 302-6287  
SOLACEBOATS.COM

### Angling Regulations

1. From the time that a fish strikes or takes a bait or lure, the angler must hook, fight, and land or boat the fish without the aid of any other person, except as provided in these regulations.
2. If a rod holder is used, once the fish is hooked, the angler must remove the rod from the rod holder as quickly as possible.
3. In the event of a multiple strike on separate lines being fished by a single angler, only the first fish fought by the angler will be considered for a world record.
4. If a double line is used, the intent of the regulations is that the fish will be fought on the single line most of the time that it takes to land the fish.
5. Use of a rod belt or waist gimmel is permitted.
6. When angling from a boat, once the leader is brought within the grasp of the mate, or the end of the leader is wound to the rod tip, more than one person is permitted to hold the leader. Anyone assisting a shore-bound or wading angler must be within a rods length of the angler before touching the leader or netting or gaffing the fish.
7. One or more gaffers may be used in addition to persons holding the leader. The gaff handle must be in hand when the fish is gaffed.
8. The angling and equipment regulations shall apply until the fish is weighed.

### The following acts will disqualify a catch:

1. Failure to comply with equipment or angling regulations.
2. The act of persons other than the angler in touching any part of the rod, reel, or line (including the double line) either bodily or with any device, from the time a fish strikes or takes the bait or lure, until the fish is either landed or released, or in giving any aid other than that allowed in the rules and regulations. If an obstacle to the passage of the line through the rod guides has to be removed from the line, then the obstacle (whether chum, rubber band, or other material) shall be held and cut free. Under no circumstances should the line be held or touched by anyone other than the angler during this process.
3. Resting the rod in a rod holder, on the gunwale of the boat, or any other object while playing the fish.
4. Handlining or using a handline or rope attached in any manner to the angler's line or leader for the purpose of holding or lifting the fish.
5. Shooting, harpooning, or lancing any fish (including sharks and halibuts) at any stage of the catch.
6. Chumming with or using as bait the flesh, blood, skin, or any part of mammals other than hair or pork rind used in lures designed for trolling or casting.
7. Using a boat or device to beach or drive a fish into shallow water in order to deprive the fish of its normal ability to swim.
8. Changing the rod or reel while the fish is being played.
9. Splicing, removing, or adding to the line while the fish is being played.
10. Intentionally foul hooking a fish.
11. Catching a fish in a manner that the double line never leaves the rod tip.
12. Using a size or kind of bait that is illegal to possess.

13. Attaching the angler's line or leader to part of a boat or other object for the purpose of holding or lifting the fish.
14. If a fish escapes before gaffing or netting and is recaptured by any method other than as outlined in the angling rules.
15. Holding or touching an angler in a manner that assists them in fighting the fish or takes pressure off of the angler. Touching or briefly holding the angler to prevent them from falling does not constitute a disqualification.

### The following situations will disqualify a catch:

1. When a rod breaks (while the fish is being played) in a manner that reduces the length of the tip below minimum dimensions or severely impairs its angling characteristics.
2. Mutilation to the fish, prior to landing or boating the catch, caused by sharks, other fish, mammals, or propellers that remove or penetrate the flesh. Injuries caused by leader or line, scratches, old healed scars or regeneration deformities are not considered to be disqualifying injuries. Any mutilation on the fish must be shown in a photograph and fully explained in a report accompanying the record application.
3. When a fish is hooked or entangled on more than one line.
4. When a catch violates laws or regulations governing the species or the waters where it was caught.





# ATLANTIC MARINE ELECTRONICS

IS THE SOURCE FOR ALL YOUR MARINE  
NAVIGATION & COMMUNICATION NEEDS



**SUPERIOR SALES, SERVICE & SUPPORT**



Riviera Beach  
561.493.2833  
Bradenton  
941.792.3847  
Destin  
850.279.4274



Nags Head  
252.441.1360



Port Aransas  
941.713.6524



New Gretna  
609.296.8826

**FURUNO**

**GARMIN**

**KVH**

**Raymarine**

**SIMRAD**

**FLIR**



atlantic-me.com

# Marine Art Gallery



*The artist who creates marine art is a special breed. They, like all of us, have found motivation and inspiration in the beauty of the pelagic species. How many times have you found yourself daydreaming about the colors of a pelagic and how the colors change and shift with the colors of the water, the angle of the sun, and the excitement level of the fish? Artists who focus on pelagics have the same daydream and the capability to transfer their vision onto their chosen medium and style of approach. The gallery in the following pages is representative of the approach of four outstanding artists, capturing the beauty and power of pelagics expressed in their individual manner.*





**FATHOMS**

COASTAL CLOTHING & GIFTS

GIFTS  
MEN'S CLOTHING  
WOMEN'S APPAREL  
SUN GLASSES

HUK  
SALT LIFE  
PELAGIC  
AFTCO  
HOOK AND TACKLE  
TOURNAMENT  
SHIRTS

1231 Route 109  
(609) 884-3907  
[SouthJerseyMarina.com](http://SouthJerseyMarina.com)



*At South Jersey Marina*  
**Where the Bridge Meets Cape May**

# Dennis Friel



Dennis Friel's artwork celebrates the coastal culture. His talents are a hybrid of design and fine art. Over the course of his storied career, he has pulled upon his mastery of a range of mediums to shine through and solidify himself as a creative influencer in the marine industry, especially in his home state of Florida, which he calls the "mecca of marine art."

Dennis is known for bringing game fish and underwater environments to life with vivid imagery that shows the constant flow of the ocean and the power of apex predators. He works across a wide variety of mediums but maintains a unique, fluid style with a soulful and innovative approach.

He pulls from his experiences on the water, travels and his Florida surroundings as his greatest influence, and art admirers and ocean lovers have embraced his approach. Dennis has built a body of work that is supported by collectors and clientele from all corners of the globe. From Costa Rica to Hawaii, Africa to Dubai, Australia to the Mid Atlantic Coast — if it's Connected By Water®, chances are you will find his artwork there.

As a true conservationist, he holds his support of our natural resources and fisheries unquestionably close to his heart. His charitable work for the Coastal Conservation Association (CCA), The Billfish Foundation (TBF) and the International Game Fish Association has been done with a great amount of purpose. He has used his creativity to help many charitable organizations with past efforts for the Boys and Girls Club, Surfers for Autism and Freedom Fighters Outdoors (FFO) being among his proudest pro-bono efforts to date.

Dennis Friel is an artist, fisherman, loving husband, and father of two children. Along with a dedicated staff, he operates a full-time art studio located along the intracoastal waterway in Pompano Beach, Florida, which he's labelled Connected By Water®. Servicing clients with custom artwork, apparel, boat wraps and accessory printing needs, they continue to build upon their line of branded apparel and private artwork collections.

*Contact Info*

**[www.ConnectedByWater.com](http://www.ConnectedByWater.com)**





With Humphree stabilization everyone on board will feel as safe and steady as on dry land. Electric fin stabilisers lowers roll and slamming by up to 80% both at anchor and when cruising. And it feels like even more. Interceptor trim tabs is used to reduce resistance meaning higher speed, lower fuel consumption and less CO<sup>2</sup> emissions. On top of automatic trim and list, Humphree interceptors also stabilize the boat when cruising. Use our interceptors and fin stabilizers separately or integrated as a package.

Love the sea and help our planet at [humphree.com](http://humphree.com)

#### HUMPHREE CONTACTS

Sean Berrie Phone: 757 374 9435 • Brett Marshall Phone: 757 374 9720  
Humphree USA Inc • 103 Dixon Street • Selbyville Delaware 19975

**HUMPHREE®**  
[www.humphree.com](http://www.humphree.com)

#### BENEFITS

IMPROVED FUEL ECONOMY, UP TO 25%  
FASTER ACCELERATION  
IMPROVED VISIBILITY AND SPEED  
LESS ENVIRONMENTAL IMPACT  
UP TO 80% LESS ROLL MOTIONS

**MAYER'S**

# FOOD & DRINKS

894 3RD AVE, CAPE MAY  
609-435-5078  
MAYERSTAVERN.COM

FOLLOW US @MAYERSTAVERN







**100% GATED AND SECURED YARD • 42 SLIPS • ALL NEW  
SULLIVAN FLOTATION DOCKS WITH NEW ELECTRIC •  
SEPARATE SERVICE BUILDING WITH MARINE STORE**

Certified Technicians

Travel Lift 70BFM Capacity 140,000 Lbs.

Travel Lift 60 Ton Capacity 120,000 Lbs.

Marine Travel Lift M2000 Forklift Capacity 20,000 Lbs.

Hydraulic Yard Trailer 40,000 Lbs.

Hostar Hydraulic Over the Road Trailer 19,000 Lbs.

Engines: Yamaha, Mercury, Volvo, Mercruiser

Fiberglass and Gel Coat Repair

Bottom Painting

Boat Canvas

Boat Detailing

Farrow System – Paint Removal

Mobile Service

Electronics Sales, and Installations



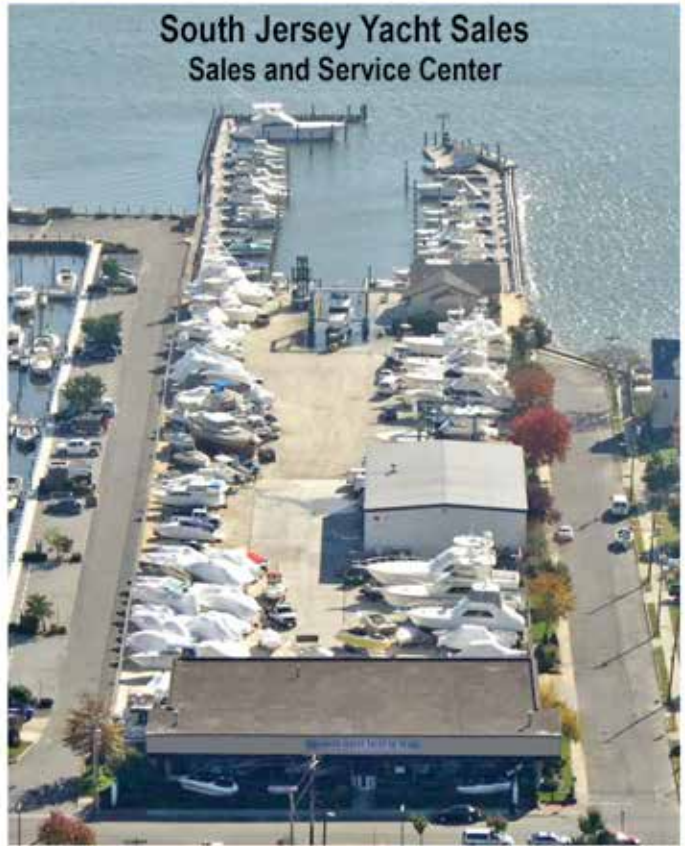
**South Jersey Yacht Sales & Service Center**

680 Bay Ave

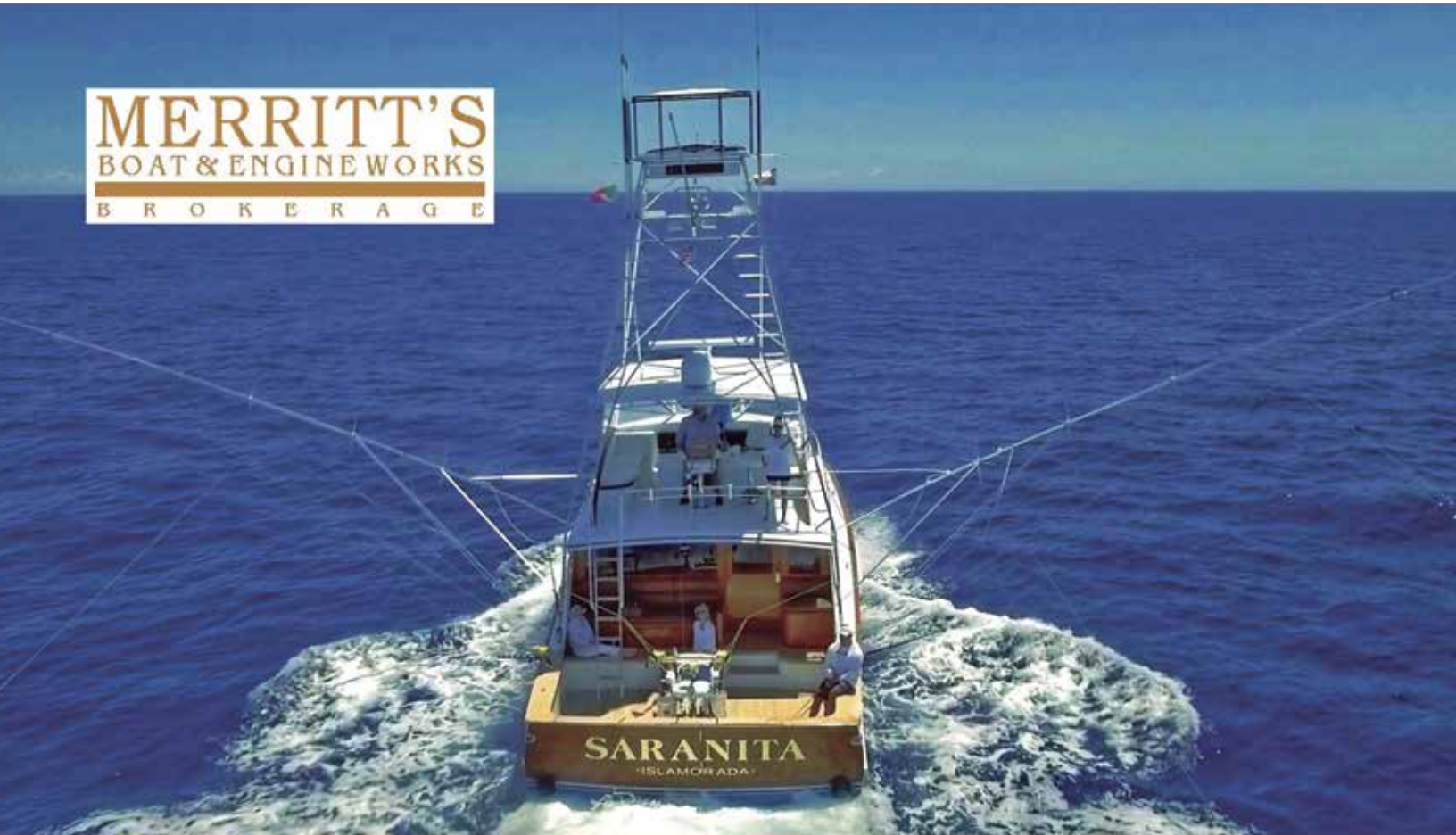
Somers Point, NJ, US, 08244

(609) 927-1175

## South Jersey Yacht Sales Sales and Service Center



**MERRITT'S**  
BOAT & ENGINE WORKS  
B R O K E R A G E











# THE MIDATLANTIC

*Celebrating 30 Years of Competition, Opportunity, Camaraderie*

## AUGUST 21-26 2022

### A Record \$5,929,050 Paid Out in 2021

**FISH FROM: Cape May, NJ or Ocean City, MD**  
**5 Nights of Hospitality in Both Ports!**



### 2021 Record Purse \$5,929,050 Shared Among 30 Winners 2021 TOP TEN PAYOUTS

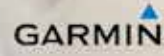
Billfisher - \$1,167,762 | Sea Wolf - \$1,017,127 | Pipe Dreamer - \$1,000,066  
 Fish On - \$680,387 | Go In Deep - \$412,237  
 RoShamBo - \$292,152 | The Right Place - \$252,452 | Wolverine - \$198,716  
 Amarula Sun - \$166,920 | Lucky Duck II - \$162,604



*Participant & Sponsor Information Call (609) 884-0177*



**YAMAHA**



#### EXHIBITING SPONSORS

Alexseal | Bridge Group Morgan Stanley | Bucket Brigade Brewery | Cambria USA / Maclaren | Canyon Club Marina | Christi Insurance | Garmin  
 Hank Sauce | High Noon Hard Seltzer | Huk | Humphree | Interlux / Awlgrip | Johnson & Towers | Krazy Salts | Mack Boring  
 Scania | Mid Shore Electronics | MTU | Premier Yacht Management | On The Rip Magazine | Roffs | Service Center at Canyon Club Marina  
 Slack Tide Brewery | South Jersey Marina | South Jersey Yacht Sales | Sunset Marina | United Rentals | Viking Yachts | Yamaha

FOR COMPLETE INFORMATION AND ONLINE REGISTRATION GO TO  
**THEMIDATLANTIC.COM**





D. FRIEL



# HIGH NOON<sup>®</sup>



**HIGH NOON WINS  
BEVERAGE BRAND  
OF THE YEAR!**

**HIGH NOON CONTINUES TO BE TOP RATED!**



- Gasoline
- Diesel Fuel On-Road & Off Road
- Heating Oil
- Marine Lubricants "Environmentally Friendly"
- Heavy Duty Engine Oils
- Hydraulic Oils
- Gear Oils
- Grease
- Anti-Freeze
- Diesel Exhaust Fluid "DEF"
- Equipment: AST Tanks, Pumps, Hoses & Parts
- Loaner Tank & Equipment Program

Proudly Serving  
New Jersey's Marine Industry  
For Over 80 Years  
*From Cape May to New York Harbor*



**GLOBE PETROLEUM**  
*Always at your service.*

HEATING OIL • DIESEL FUEL • GASOLINE • ON-SITE FUELING • LUBRICANTS

**For More Information  
Please Call  
908-770-9486**

Proud Suppliers of:



VALVITEC MARINE DIESEL  
VALVITEC MARINE GASOLINE



# George Kalwa



*My first job was steaming crabs at the House of Neptune in Baltimore. I was 15. The lump meat was provided by these ladies from Metomokin Seafood in Crisfield, Maryland. They were masters at the art of picking and were a joy to be around.*

Born and raised in Baltimore, Maryland, George Kalwa has been captivated by the ocean his entire life. An artist since birth, Kalwa began painting and making fishing lures as a child. As he grew, he spent summers drawing portraits on the Ocean City, MD boardwalk before going to the Maryland Institute College of Art. George has always been

inspired by light, contrast, and color, making his attraction to billfish and the marine world such a natural fit. George creates paintings that seem to move in front of your eyes, dropping you into the exact moment a blue marlin breaches the water to fight the line, or a white marlin breaks the surface to capture unlucky prey.

George spends most of his time painting billfish and sport-fishing inspired portraits and scapes. You can find him on social media @GeorgeKalwaFine Art, georgekalwa@comcast.net , or by phone at 443-386-8966.

*Contact Info*

**@GeorgeKalwaFine Art | georgekalwa@comcast.net | 443-386-8966**





*New construction and  
renovating interiors for  
over 35 years.*



*Creating lifestyles for the marine, residential & commercial  
Interior Design Worlds*

405 bloomfield drive, suite 5 | west berlin, nj | 856.753.1223 | [info@wbc.design](mailto:info@wbc.design) | [www.wbc.design](http://www.wbc.design)

*Exclusive design firm for Viking Yachts*







SERVING NEW JERSEY BOATERS SINCE 1963



 **YAMAHA**



**Everglades**

HYBRID: 24, 25, 27  
CENTER CONSOLE: 23, 25, 29, 33, 36, 45



 **PURSUIT**

SPORT: 23, 26, 28, 32, 35, 37, 42 OFFSHORE: 32, 35, 38  
DUAL CONSOLE: 24, 26, 29, 32, 36



 **SPORTSMAN**  
BOATS

BAY: 20, 21, 22, 23, 24, 26  
CENTER CONSOLE: 21, 23, 24, 26, 28, 30, 32, 35

**STONEHARBORMARINA.COM**

**609-793-8825**

1140 STONE HARBOR BOULEVARD • STONE HARBOR, NEW JERSEY 08247







You can't get more  
waterfront than this

SALTWATER  
CAFE



at South Jersey Marina  
RESERVATIONS WELCOME

SERVING  
BREAKFAST & LUNCH  
DOCKSIDE

1231 Route 109 • Where the bridge meets Cape May  
(609) 884-2403 • [SaltwaterCafeCapeMay.com](http://SaltwaterCafeCapeMay.com)







# Henriques

YACHTS, INC.

SEMI  
CUSTOM  
BOAT  
BUILDER

Good Luck To All  
Participating in the  
**MID ATLANTIC**  
Tournament!



35' EX



50' SF



Comfortable Helm Area

[www.HenriquesYachts.com](http://www.HenriquesYachts.com)

198 Hilton Ave. Bayville, NJ 08721

Phone: 732-269-1180

Email: [info@henriquesyachts.com](mailto:info@henriquesyachts.com)

**MADE IN THE U.S.A.**

*Follow Us*



# Mike Savlen



Mike Savlen grew up near the water, in Plymouth, Massachusetts, and began to fish with his father at the age of two. Since then, he says, water and fish have fascinated him. His interest in painting began at about the same time, he found a can of house paint in the trash and decided to re-paint the family car. “I guess,” Savlen says, “my parents didn’t quite understand my artistic vision!” Mike’s travels since that auspicious beginning have taken him to some of the most inspiring locations

for an artist with a passion to create marine works. Mike has traveled and fished the entire East Coast, the Caribbean, with detours from Alaska to Costa Rica. The inspiration for Savlen’s work is drawn from the natural world around him. “The outdoors is my cathedral,” he says. “I have a visceral need to be in the woods, or on the water.” Mike Savlen’s use of vibrant colors in his work accents movement, speed, and the momentary refractions of a fish in water. The results are startling.

*Contact Info*

**[www.SavlenStudios.com](http://www.SavlenStudios.com)**





RIVIERA  
BEACH

MANTOLOKING  
NEW GRETN



OPEN 212

Now a Proud Dealer of



282TE



TOURNAMENT, OPEN, MASTERS,  
& HERITAGE SERIES



35 ST

The Northeast's #1  
**CONTENDER**  
DEALER



25 B, 25 T, 28 T, 32 ST, 35 ST,  
39 ST, 39 FA, 44 ST, 44 FA, 44 CB

New Gretna, NJ  
609.296.2388

Brick Township, NJ  
732.704.3035

Riviera Beach, FL  
561.881.1127

VALHALLABOATSALES.COM





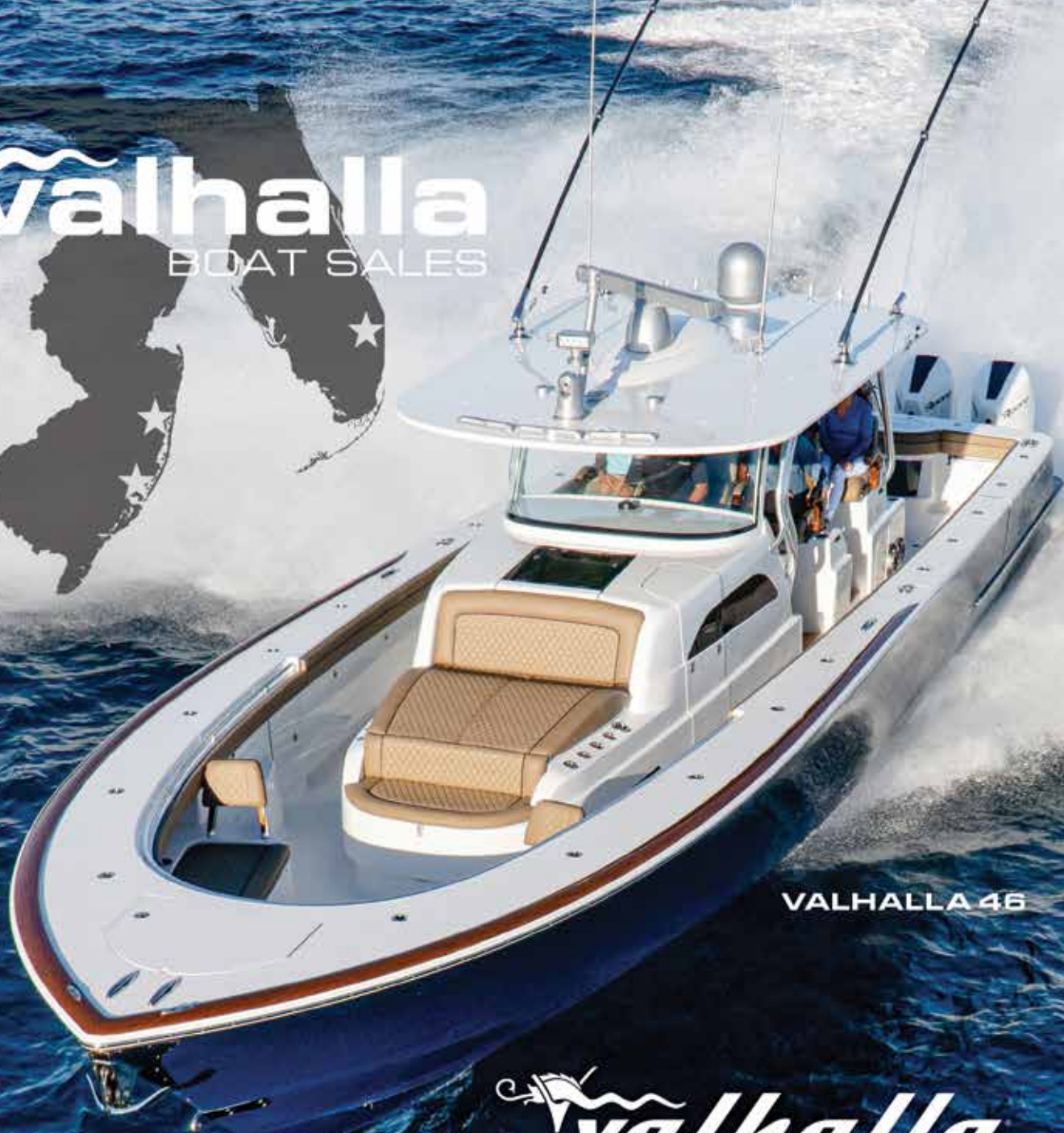






# valhalla

BOAT SALES



VALHALLA 46



## valhalla

Boatworks

An Elite Fleet of Center Consoles from Viking Yachts.

**V-33 | V-37 | V-41 | V-46**



New Gretna, NJ  
609.296.2388

Brick Township, NJ  
732.704.3035

Riviera Beach, FL  
561.881.1127

[VALHALLABOATSALES.COM](http://VALHALLABOATSALES.COM)



## valhalla

BOAT SALES







# JARRETT BAY

*The Jarrett Bay service yard is where tradition, innovation, and expertise come together to perfect yachts of all types to award-winning standards.*



**NOW SERVING VESSELS  
UP TO 300 TONS!**



## **YACHT SERVICE**

- Engine Maintenance • Repowers
- Gensets • Stabilizers • Fabrication
- Electronics • AC & Plumbing • Paint
- Haulouts • 24/7 Mobile Service & Parts



## **FUEL SAVINGS**

The Jarrett Bay Ship's Store offers the best prices on diesel and premium ethanol-free fuel in the area, with great volume discounts available.



252-728-2565 • EASTARDMARINE.COM

## **PARTS & SUPPLIES**

- Fully Stocked Marine Parts Store On-Site
- Materials Sold by the Foot, Not Roll
- Special Orders for Custom Parts
- Over \$1 Million in Inventory



## **EXPANDED SERVICE FACILITIES**

- 93,000 sq ft of New Yard Space on 22 Acres
- 16,400 sq ft of Additional Service Buildings
- Dedicated Power, Air & Water Service for 30 Additional Vessel Spaces











THE NEW 4.2L V6 OFFSHORE

# TAKING AN EXCITING TURN

WITH BUILT-IN DIGITAL STEERING.

*The offshore's most reliable 4.2L V6 is now its most responsive, with digital electric steering. For years, the 4.2L V6 Offshore has been a fan favorite, with its outstanding 97 percent\* reliability and overall performance. Now, this offshore favorite is taking an exciting turn, with new advantages like built-in digital electric steering\* for incredible responsiveness and exhaust rerouting for enhanced reverse thrust. Right when you thought the reliable, 4.2L V6 Offshore couldn't get any better. Learn more about the 4.2L V6 Offshore 300, 250 and 225 at >[YamahaOutboards.com/V6Offshore](http://YamahaOutboards.com/V6Offshore).*



\*Mechanical 1225, 1500, and 1900 models remain unchanged. 4.2L V6 Offshore 225 compatible only with out-on digital electric steering. \*Refers to analysis of warranty claims data for powerhead, lower unit, and/or trim/tilt unit only on select outboards. This data was collected between January 1, 2014 and November 9, 2020, and incorporates outboards that are still covered under warranty and which may provide additional warranty claims prior to warranty expiration. Excludes explicitly stated in a product's factory limited warranty statement or extended service contract. Yamaha Motor Corporation, U.S.A. makes no warranty of any kind, expressed or implied, including, but not limited to, implied warranties of merchantability and fitness for a particular purpose, for such product. JBR080801 to always observe all applicable boating laws. Never drink and drive. Dress properly with a JECG-approved personal flotation device and protective gear. © 2021 Yamaha Motor Corporation, U.S.A. All rights reserved. 1-888-894-1508



**Reliability Starts Here.®**

# KC Scott

Artistic, even at a young age, K.C. won many awards throughout Elementary and High School. However, art was not the career path he chose. His father, a golf professional, ran the family business of multiple golf courses. K.C.'s early exposure to the game of golf led to a love and passion for the game. From a young age he excelled on the golf course winning many junior and amateur tournaments. His success on the golf course earned him a scholarship to play golf at the collegiate level. He chose Michigan State University where he played for two years, then decided to transfer to Barry University in Miami Shores, Florida. He competed for three years at Barry University and graduated with a degree in Business and Sport Management. After college the daunting question of what to do next was easy for K.C., he turned professional and put his golf game up against the best. He competed on Mini Tour circuits all over the U.S. with a fair amount of success; the highlight of his professional career came in 2003 when he qualified for the PGA Tour's Buick Open. However, after six years of dedication and frustration on the golf circuit, he decided to take a break from the game he loved.

In the fall of 2008, the needed break from golf allowed him time to venture back into his passion of art and the underwater world. In a very short period of time K.C.'s work started to draw major attention, which fueled his fire to create more



intriguing works of art. Fortunately, his vast experience of both freshwater and saltwater fish gave him a huge catalogue of images to pull from and put on canvas. K.C. paints what moves him. The beauty of the Bluegills and Largemouth Bass of his native waters in Gull Lake, and the Redfish, Snook, Tarpon, and Sailfish of his home in Florida, all inspire him to create his lifelike images on canvas. He not only catches

and studies these fish, but he also gets in the water and photographs them in their natural environment. This gives K.C. points of reference to ensure his paintings are as lifelike as possible. For him, the fish and their environment exist as one. He wants people to feel as though they are face to face with the fish, as if they could reach out, touch the canvas, and feel the cool waters of the lakes and oceans.

*Contact Info*  
**[www.KScottArt.com](http://www.KScottArt.com)**





# DOCKSIDE MARINE ENGINE SERVICE

FACTORY TRAINED /AUTHORIZED

**Onan**

**YANMAR**  
marine

**GARMIN**

**WESTERBEKE**

**Cummins**

**CAT**  
Marine Power

**SEAKEEPER**

**KOHLER**

**SOUTH JERSEY'S BEST FULL SERVICE BOAT YARD -  
PAINT JOBS, TEAK DECKING, SEAKEEPERS,  
MEZZANINES & RE-POWERS  
SCHEDULE EARLY- SLOTS FILL UP FAST!!!**

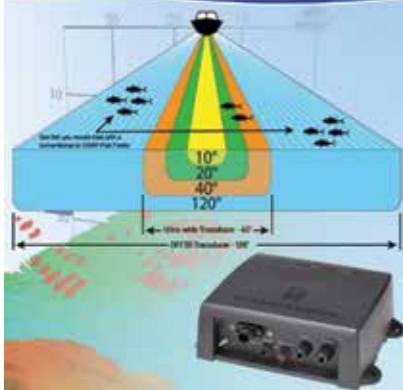
**Jersey Cape Custom Yachts** On the Mullica River Lower Bank, NJ

Ph. 609-965-8650 E-mail: [service@jerseycapeyachts.com](mailto:service@jerseycapeyachts.com) [www.jerseycapeyachts.com](http://www.jerseycapeyachts.com)





# FURUNO



# MSE

Mid-Shore Electronics



	DOVE	OPEN ARRAYS - 3.5', 4', or 6'		
NXT	DRS4D-NXT	DRS6A-NXT	DRS12A-NXT	DRS25A-NXT
X-CLASS	DRS4DL*	DRS6AX	DRS12AX	DRS25AX

Go on a  
**POWER TRIP**

## CAMBRIDGE, MD

205 Trenton Street  
Cambridge, MD 21613  
410-228-7335



## OCEAN CITY, MD

12507 Sunset Ave, #11  
Ocean City, MD 21842  
410-213-1212

**CALL NOW: 1-877-GPS-RADAR**



Chart House Marine Electronics & Outfitting  
3059 Ocean Heights Ave.  
Egg Harbor Township, NJ, 08234  
(609) 927-1175 | paul@charthouseelectronics.com

Our mission is to provide clients with exceptional sales, professional installations, and unprecedented service. We specialize in navigation and communication equipment, entertainment systems, trolling motor installations, and more. We partner with some of the best companies within the boating industry including Garmin, Furuno, Simrad, Raymarine, LOWRANCE, Navionics, ICOM, KVH, Optimus, and Fusion just to name a few. We provide top-of-the-line installations on boats ranging from small freshwater bass boats all the way up to big saltwater offshore sportfishing boats.









# Canyon Club

MARINE SERVICE

*All Services are Performed In-House and on our Premises.*



**DRIVE TRAINS & PROPELLERS:** We are drive train specialists, providing the full range of new, replacement and maintenance services for your vessel's shafts, propellers, struts & bearings, and couplings. • Manufacturers represented include: Michigan Wheel, Federal, S&S, ZF & Acme Propellers. • Bow & Stern Thrusters by IMTRA.

**FIBERGLASS & CARPENTRY:** Routinely handling tasks that entail structure, custom & finish work, major rebuilds and repair, and application of gel coat and paint.

**PARTS DEPARTMENT:** An Extensive and complete inventory on site of just about everything.

**OTHER SUPPORT SERVICES:** General repair of all associated mechanical systems. State-of-the-art bottom cleaning. • Enclosures, canvas & cushions by Costa Marine. Tower fabrication, modification and installation available on site, all year, through Oceanview Custom Marine, a major, boating industry fabricator.

**WINTERIZATION & YARD SUPPORT:** Winter storage, in water or on shore. Travel lift to 80 ton capacity.

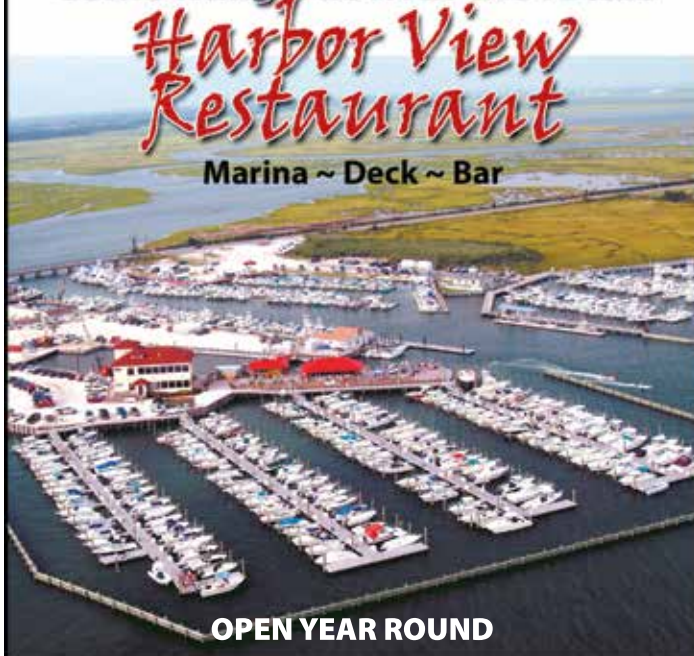
Canyon Club  
MARINE SERVICE

Canyon Club Marine Service | 900 Ocean Drive | Cape May, NJ 08204 | (609) 884-0333 | [www.CanyonClubMarina.com](http://www.CanyonClubMarina.com)

**"Come hang out with the locals"**

**Harbor View  
Restaurant**

Marina ~ Deck ~ Bar



**OPEN YEAR ROUND**

Lunch 11:30 to 5 pm ~ Dinner 5 to 10:00 pm daily  
Breakfast Sat & Sun 8 to 11:30 am

1/2 mile past Canyon Club on the right

**HarborViewCapeMay.com**

**954 Ocean Drive ~ 609-884-5444**

**CAPE HARBOR MOTOR INN**

*Offering Cape May's Finest Accommodations Off the Beach*



### FEATURING

Luxurious 2 Room Efficiency Suites • Queen Bed Motel Rooms  
Cable Color TV • Off Street Parking • Air Conditioning • Refrigerators  
Shuffleboard • Beautiful Landscaping • Daily Maid Service • Sundeck  
Pool • Heat • Barbecue Area • Telephones

### CLOSE TO:

Beaches • Coast Guard Base • Marinas • Fishing Center • Miniature & Pro Golf  
the Corinthian Yacht Club • Restaurants • Shops • the Historical Downtown

**715 Pittsburgh Avenue, Cape May, NJ 08204**

**609-884-0018 • [www.capeharbormotorinn.com](http://www.capeharbormotorinn.com)**







## 49th Annual White Marlin Open



RECORD  
**\$9.2 MILLION**  
purse in 2021

August 18-12, 2022 | Ocean City, MD

[www.whitemarlinopen.com](http://www.whitemarlinopen.com)

## HANDCRAFTED BREWS CREATED TO PUT OUT THAT FIRE OF A THIRST

QUALITY, HANDCRAFTED ALES, PILSNER & LAGERS  
SERVED UP IN A FUN, EXCITING PLACE TO ENJOY THEM



205 N. MAIN ST. CAPE MAY COURT HOUSE, NJ 08210  
609-778-2641 • [WWW.BUCKETBRIGADEBREWERY.COM](http://WWW.BUCKETBRIGADEBREWERY.COM)

8605 LANDIS AVE  
SEA ISLE CITY  
NEW JERSEY  
08243



**CURRENT  
MENU**

**hanksauce  
.com**



**FIND SAUCE  
NOW!**



**hank\_sauce**



# Valhalla Boatworks - On a Mission

by Karl Anderson

The image most commonly associated with Viking Yachts is a full line of large sportfishing boats as one sees at boat shows, or the Viking demo boats over the years that can be counted upon to arrive at every major sportfishing tournament on the circuit. Vikings can be found in dominant numbers in every port, not just in the coastal United States, but internationally. Absolute testimony to the hard work, strategic planning, and dedication to “pushing the envelope to build a better boat every day” in the words of Pat Healy, President and CEO of Viking Yachts. When looking at any successful business we sometimes don’t think beyond the image that has been created by excellent marketing and public relations that successful businesses rely on. The core remains the people who make up a team, and what they bring to the table with ideas, inspiration, creativity, and perhaps most importantly, what they do in their own lives that sparks these ideas, inspiration, and creativity.



Viking Yachts sits smack dab in the middle of coastal Southern New Jersey in the estuarial watershed of the Mullica and Bass Rivers, the Barnegat Bay, Little Egg Bay, Great Bay, and Great Egg Bay, an area that has a storied history of not only a bountiful inshore and coastal fishery, but also a tradition of abundant pelagic species in the offshore waters. All of the water and life in this area has spawned an incredibly rich history of boat building. The wide array of designs and applications built and used locally have been driven by necessity to complete a task. Just as the pursuit of offshore fisheries for marlin and tuna has driven Viking Yachts to continue to “push the envelope” advancing their boats to the forefront of the industry, the inshore and coastal fishery has had an impact on the lives of the Viking team as well.

As in any line of work, sometimes you just have to leave it all behind and go do something that puts you in your happy place. For some folks it can be golf, gardening, bocce ball, or an afternoon nap. A good number of the Viking team reside in coastal communities and chasing after the inshore fishery in small boats is a natural form of relaxation for them. But after all, these are boat builders, boaters, and fishermen, so the itch to create a “better boat” had to be scratched. These folks have small family boats of their own to chase summer fluke and the prolific striped bass fishery in the fall, as well as enjoying family fun on the bays and nearshore waters. Having those hours on the water on various boats lead to imagining where construction and design could be improved upon. Design, func-

tion, style, ergonomics, storage, ride quality, fishability, and a host of other elements are what drives new product and innovation.

Early in 2004 the possibility of developing a small boat line was discussed. Don Gemmel, long time Viking Field Support Engineer, produced a design concept and business plan dedicated to introducing a small boat line to the Viking mix. Production pressures were already pushing the plant to capacity, then the financial downturn at the end of the decade and into the next moved the concept onto the back burner. The itch remained, but as with all great projects, timing is everything. As these challenges were being met and conquered, the small boat concept kept popping up in discussions and spit balling sessions throughout the ensuing decade. The “itch” was never far away.

In the over fifty-year history of the Viking facility in New Gretna, the plant has undergone significant modernization, expansion, and growth. With the emergence industry-wide of super-sized sportfishing platforms, facilities need a great deal of space to build the 60 to 90 footers. The molds and finished parts pushed space availability to the limit at the Viking plant. As the vision to create the Valhalla Boatworks center console project came in to focus, the need for production space became a critical ingredient to launch and perpetuate a successful project. The Viking team knew they wanted it close by to nurture and manage the process. While looking at several facilities in the area, the perfect opportunity presented itself.

A short drive from New Gretna through the

Pinelands up the Mullica River, the boat building facility of the Leek family became available on the market. This location offered the ability to construct, sea trial and test boats prior to delivery, securing Viking the ideal expansion space to not only launch the center console project, but also to construct the smaller Viking convertible models. The Viking Mullica plant under the guidance of General Manager John Leek IV commenced construction in 2016. Over the next five years they built the 37’ and redesigned 38’ Billfish models, 44’ Convertible and Express, and the 52’ Convertible.

In early 2018 the Valhalla project was hitting the fast track. Starting with a blank canvas and utilizing the years of boatbuilding experience from the varied team members at their disposal, the design process began. Working with well-known marine designer Michael Peters and his team to secure a good running surface for the new outboard boats, the Valhalla team started an aggressive mission to design, build, and release several models concurrently. Few builders undertake such a task, as focusing on development of one model at a time is the traditional build strategy. The Valhalla 33’, 37’, and 41’ models were introduced at the Viking Dealer Meeting in the summer of 2019. A stunning accomplishment considering that the Mullica Plant was producing a total of ninety-nine Viking Convertibles and Express models during this time period, all the while ramping up the facility and workforce for the Valhalla project.

Being no strangers to boat building meth-

*see Valhalla on pg 79*





# SCANIA

Scania DI13



Configuration: Inline 6  
Displacement: 13 liters  
Horse Power Range: 250 - 900

Scania DI16



Configuration: V8  
Displacement: 16 liters  
Horse Power Range: 550- 1150

**MACK**  
BORING & PARTS CO.

[www.mackboring.com](http://www.mackboring.com) • Sales: Jeff Miller 856-340-5604



Engine Boring & Parts Co.

## SOUTH JERSEY TOURNAMENTS APP



Available on the  
App Store



Enter Tournaments & Calcuttas  
Tournament Rules  
Schedules for Each Event  
Live Updates

Leaderboard Changes  
Layday Status  
Upload Your Boat Picture  
Sponsor Information

odology and technology, the design team looked at numerous processes and materials to come up with the best blend for their applications and expertise. Making parts with precision has become easier and shortened timeframes in the process with the integration of powerful CAD programming with 3-D solid modeling and surfacing computer programs that can feed information to a 5-axis router which cuts the parts to the finest tolerances specified. This type of precision aids in the assembly process creating a tight, even fit for parts and hardware.

Depending on the parts being built, there are several proven processes employed in the build of Valhalla boats. This process is known

lightweight and specific density properties of two layers of 2-inch Corosa board glued together then glassed in. Again, taking advantage of diversified technologies for different applications and requirements to get the best results for their product.

Blending precision parts with top quality Gemplux hardware and accessories has yielded positive results. Powered with either Mercury or Yamaha outboard power, the performance numbers of each model are notable, a testament to the design and engineering efforts put into the Valhalla project. You can be sure any future models will continue to improve on this impressive start.

Looking around the waterways, it is nearly impossible not to see either a Viking or Valhalla. In a very short time, Valhalla has made a significant impact on the center console marketplace. As of August 2021, they had delivered over 150 boats. Driven by a dedicated workforce of approximately 200 employees, the team at Valhalla has become a very large competitor in this segment of the market. Moving forward it will be exciting to see what new models are coming down the line. Creating new and viable products for customers is something that is ingrained in the culture at Viking and Valhalla while the end user is the grateful benefactor of that mindset.



as FRP, Fiber Reinforced Plastic construction. The folks at Valhalla use a vinylester blend resin and a selection of custom fabrics tailored for specific areas of the boat. These fabrics are spun like yarn from continuous strands of fibers and woven into cloth in many different patterns. These fabrics can be single layer cloths or multilayered and different weight cloths that are stitched together to give the best strength and fit where it is needed. These fabrics, once cured with resin, along with the use of Airex core material is what gives the strength to weigh ratios allowing the boat to reach peak efficiency and speed while not sacrificing any toughness or safety. These processes for weight savings are all very familiar to the Valhalla and Viking folks for their proven properties in making a solid product. Familiarity with these materials and processes for the workforce plays a large role in the success and quality of the Valhalla line.

The stringer systems are fully molded to fit the hull with precise tolerances, in order to accomplish the best fit, meet weight and strength criteria. The stringers are laid up on a male mold, vacuum bagged, and resin infused to maintain the required technical consistency and repeatability for each unit. They are then glued into the hull using a methacrylate product known as SciGrip creating a strong chemical bond unifying the two parts.

Transoms are another area that require a great deal of engineering to meet the stringent requirements for strength, rigidity and design qualities, all while being styled for a desired look and appearance. The 33, 37 and 41 use a system on their transom that is a poured ceramic material which cures into a rigid hard surface and fills the gap between the hull and molded deck part. The 46' transom utilizes the





## Kushner Drapery Manufacturing

Fine custom window treatments,  
upholstery and bedding



*Proud supplier to Viking Yachts*

Family owned and operated for over 65 years  
Residential, Commercial and Yacht Interiors

**(856) 317-9696**

Workroom@KushnerDraperies.com | www.KushnerDraperies.com

# NOW OPEN

## LUCKY BONES

BACKWATER GRILLE



**GOOD FOOD**

Lunch    Dinner    Late Night  
Thin Crust Brick-Oven Pizza

**1200 Route 109 South, Cape May**  
**(609) 884-BONE (2663)**

# Washington Inn

*"Always classically cool"*



Serving Dinner from 5pm

801 Washington Street ♦ 884-5697  
www.WashingtonInn.com



# SUNSET

*Liquors*

WEST CAPE MAY, NJ


Mon. - Saturday 10:00 am to 10 PM

Sun. 11 AM to 10 PM

106 Sunset Boulevard, West Cape May

**609-435-5052**

kyork@sunsetliquorm.com

 SunsetLiquorsWestCapeMay

**FREE DELIVERY**

# Fishing Club Focus

by Jeff Merrill

## *The Manasquan River Marlin and Tuna Club*

Founded in 1936, the Manasquan River Marlin and Tuna Club ranks among the oldest fishing clubs not only in New Jersey but in the United States as well and was among the first clubs to be certified by the International Game Fish Association back in 1939. A club with a rich and well documented history, over the years many of its members were world famous anglers, internationally known authors, sports writers, entertainers, restaurateurs, industrial giants, and radio-movie stars. Several of its members were and to this day still are state and world record holders. Some of the club's members from its founding days are also names well-known in sportfishing history including Lou and Eugenie Marron, Maurice and Carolyn Meyer, Jr., Ferdinand Roebeling III, Van Campen Heilner, A.E. Carpenter, Hugo Ruthertford and Orton Dale, Jr. Over the years many of the club's members left their mark on the marine industry while others were and continue to be known for the philanthropical generosity. Additionally, back in the late 1950's many of the club's members were the early explorers of offshore waters and helped develop today's canyon fishery from the Texas Tower to the Hudson and beyond at a time when electronic navigation was in its infancy.

Tuna were indeed the species of choice in the early days of the club as huge schools of bluefin tuna ranging from school-sized to giants of several hundred pounds were consistently found prowling the famed Sea Bright Grounds off the northern coast, often within sight of land. Anglers from around the world would frequently visit New Jersey with the hope of catching what they often referred to as a "horse mackerel." Francis H. Low, the founding president of the club, was a world-record holder for the largest tuna caught on rod and reel at that time and to this day the club continues to award the Manasquan Tuna Trophy in his memory, a perpetual trophy presented each year for the largest bluefin tuna caught worldwide by a club member. In a nod to tradition

of the good old days, over 80 years later, a case of scotch (or liquor of the recipient's choice) continues to be awarded each year to the club member landing the first bluefin tuna over 25 pounds caught trolling and the largest bluefin tuna over 310 pounds caught while fishing out of Manasquan Inlet. In the club's first year of existence a mid-boggling 37 giant bluefin tuna were weighed including a 720 pounder. Additionally, the first broadbill swordfish caught off New Jersey was taken by Francis Geer, Jr., after a ten-hour battle and weighed 382 pounds! Two white marlin we also caught by the same club member on separate days at the Mohawk Wreck, which



lies less than 10 miles from Manasquan Inlet! These angling accomplishments brought recognition to the area and signs noting Brielle as "The Sportfishing Capital of the World" began to appear.

The foundation of much of what we do today with regard to tackle, bait rigging, fishing techniques, boat design and cockpit layout dates back to the early days of the Manasquan River Marlin and Tuna Club. When travel destinations including The Outer Banks of North Carolina, Florida, The Bahamas, Cuba and beyond became popular, many of the club's members were anxious to explore these new horizons and test their fishing potential. Today, this passion still exists as many members continue to explore new areas around the globe in search of the

next "hotspot."

Tournaments have always played an important part of the club and members have consistently participated in events where everything from bluefish to blue marlin are the targeted species. Some of the most prestigious events from New England to Florida, as well as Mexico and South America often saw and to this day continue to see vessels flying the club burgee as participants. Though many of the early events are no longer around, the Manasquan River Marlin and Tuna Club was represented well with many members taking the top prize in the tournaments.

The earliest tournament dates back to the club's first year, 1936, when a boat from the club met another vessel at sea from the Freeport Tuna Club and decided to have a tournament. At the end of the day, they relayed their catch results to each other by phone. The following year the Atlantic City Marlin and Tuna Club, Forked River Tuna Club and Brielle Marlin and Tuna Club got together with the Manasquan River Marlin and Tuna Club and Freeport Tuna Club and the United States Atlantic Tuna Tournament, or the USATT as it was known, was born, though that name for the event didn't become official until 1938.

Tournament Headquarters for the event was initially Hoffman's Anchorage, now known as Hoffman's Marina, in Brielle until the event outgrew the marina and moved to Sandy Hook. As fishing for giant bluefin tuna expanded up the northeast coast, the USATT's headquarters followed.

Over the years, in addition to the USATT, club members actively participated in popular events and represented the club well. The Woman's Invitational Tuna Tournament was founded in 1972 because at that time women were not allowed to participate in the USATT. Tougher fisheries regulations with regard to bluefin tuna and a declining stock ultimately were the demise of the event which only

*see Focus on pg 83*





# THE CAPE MAY MARLIN & TUNA CLUB

COME JOIN THE FISHING AND FUN!

Don't miss the chance to fish with us in our  
2022 Invitational Tournaments!

## **CMMTC Junior Angler Tournament**

This inshore event is open to all Junior Anglers 16 years old or younger.  
Saturday, June 18th 2022.

## **CMMTC Independence Invitational**

Kick off the Fourth of July offshore with us!  
Captain's Choice: Friday, July 1st, or  
Saturday, July 2nd 2022.

## **CMMTC Fluke Tournament**

Saturday, August 13th, 2022.

## **CMMTC Ladies Day Invitational**

Bring the ladies and pre-fish the MidAtlantic!  
Captain's Choice: Friday, August 19th,  
or Saturday, August 20th, 2022.

## **CMMTC Labor Day Overnighter**

This tournament offers both offshore and inshore divisions.  
Saturday, September 3rd through  
Sunday, September 4th, 2022.

**and more...**



The Club offers events for all ages and interests, and is open for the use of all crews and families during participation in South Jersey Tournaments.



**CONTACT US**

609-884-1006

[cmmtc@capemaymarlintunaclub.com](mailto:cmmtc@capemaymarlintunaclub.com)

[www.capemaymarlintunaclub.com](http://www.capemaymarlintunaclub.com)

1390 Lafayette Street, Cape May, NJ 08204

lasted a few years. The prohibition of woman in the USATT was challenged in court and woman were finally allowed to participate in 1974. In the 1950's club members regularly participated in the International Light Tackle Tournament which was held in several locations over the years including Palm Beach, Mexico and Ocean City, Maryland.

Today, it's easy to spot club member boats at tournaments along the east coast and beyond. During the summer months here in New Jersey the popular offshore events held in Manasquan, Beach Haven, Ocean City and Cape May regularly draw numerous club members annually. In particular, The MidAtlantic tournament has been very popular with club members over the years, and many have scored large cash payouts dating back to the inaugural event in 1992. By fall, striped bass tournaments are on the docket for those who haven't yet headed south for the winter. The winter sailfish tournament season along Florida's famed Treasure Coast and Gold Coast is a highlight for those who make the Sunshine State home for the winter season. The West Palm Beach Fishing Club's Silver Sailfish Derby as well as the Buccaneer Cup Sailfish Release Tournament and the Sailfish Club of Florida Invitational Gold Cup Team Tournament all have a rich history and support of club members over the years.

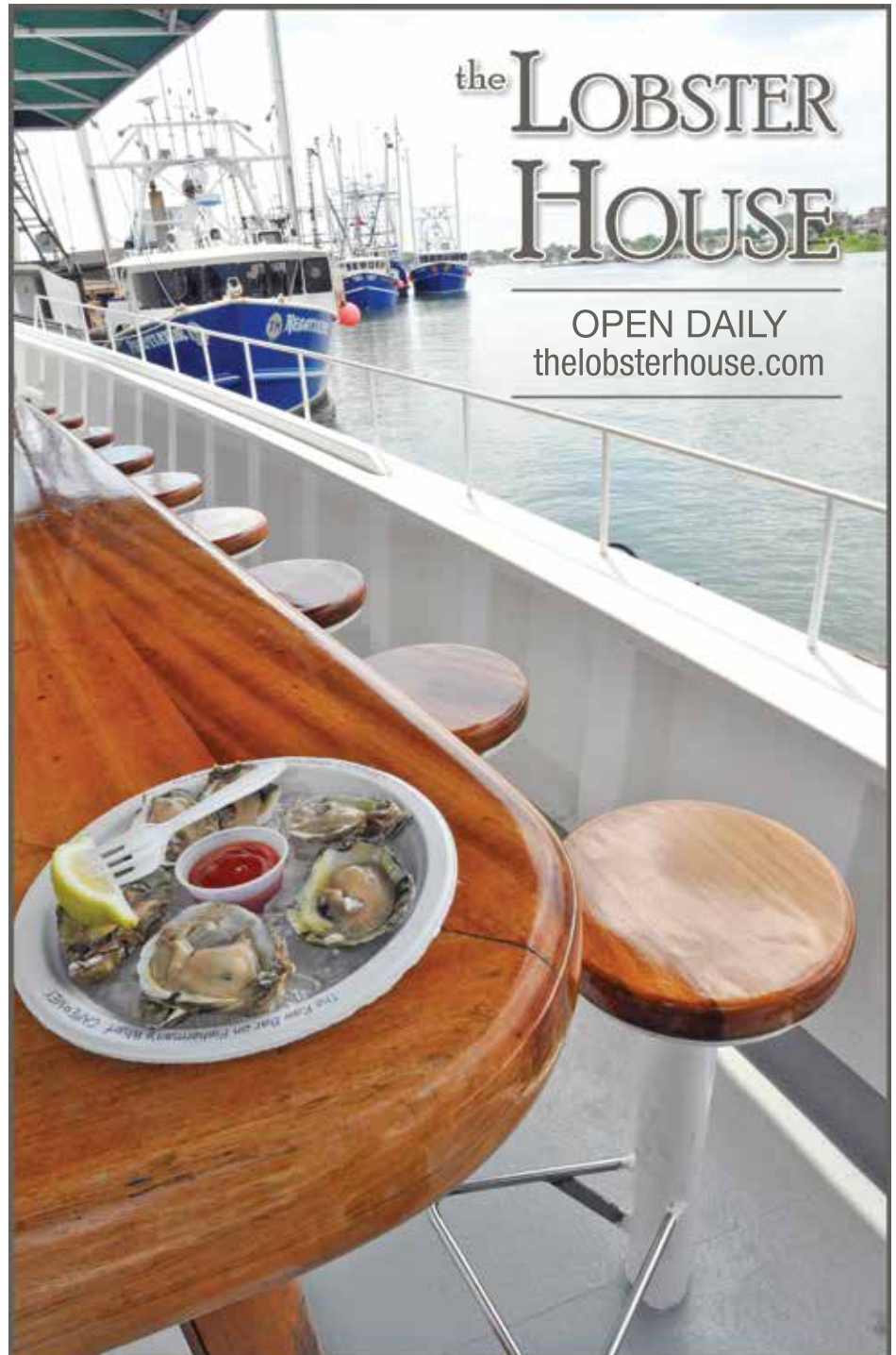
Though tournaments around the world have drawn members for decades, the slate of tournaments hosted by the club are some of the most popular. Member-only events include the year-long tournament where hand carved perpetual trophies are awarded to the winners of 19 different species categories. Other member-only events target species including bluefin tuna, fluke, striped bass, bluefish, blackfish, and sea bass. The Annual Ladies and Kids Tournament is always popular with the membership and awards prizes for a variety of inshore species at a gala picnic at the tournament's conclusion. The Offshore Open is held each year in late August. Now in its 42nd year, this event draws boats from up and down the coast.

Well known around the local community as well as a staunch backer of the recreational fishing community, the club continues to be a prominent voice in fisheries conservation while also supporting reef building and recreational fishing issues by with organizations such as the Recreational Fishing Alliance, Stripers Forever, Menhaden Defenders, Jersey Coast Anglers Association

and International Game Fish Association The club's Mates Program actively recruits children of club members ages 12 and older and teaches the ins and outs of working in the cockpit. Hands-on instruction on bait and tackle rigging, boat and tackle maintenance, safety on the water, rod building and repair and fishing techniques are but a few of the topics covered. One of the cornerstones of the club is the George Burlew Scholarship Grant which was first awarded in June 1979

in honor of Captain George Burlew, a club member who helped develop sportfishing on the Manasquan River and also owned Burlew's Anchorage. Initially the grant was awarded to high school students as well as college students. Today, the scholarship is only awarded to graduate students pursuing marine related studies.

For more information on the Manasquan River Marlin and Tuna Club please visit the club's web site at [www.mrmctc.com](http://www.mrmctc.com).







53<sup>RD</sup> ANNUAL

BEACH HAVEN



# White Marlin

INVITATIONAL

AUGUST 17<sup>TH</sup>-20<sup>TH</sup>, 2022

NEW WEIGH IN LOCATION: DOCK ROAD & THE BAY, BEACH HAVEN



[www.WhiteMarlinInvitational.com](http://www.WhiteMarlinInvitational.com)

# 2022 Offshore Events

MANASQUAN TO CAPE MAY

## JUNE

### Beach Haven 2nd Annual Tuna Open

**Fish Days:** June 5 – 11

Captains Meeting: June 5th At BHM&TC  
Weigh Ins: Beach Haven Marlin & Tuna Club

### MRM&TC 4th Annual Bluefin Open

**Fish Days:** June 8 – 11

Captains Meeting: June 8th  
Weigh Ins: Brielle Yacht Club

### OCM&TC Shark & Tuna Tournament

**Fish Days:** June TBD

Captains Meeting: \*Contact OCM&TC Directly\*  
Weigh Ins: Ocean City Yacht Club

### 4th Annual Avalon Invitational

**Fish Days:** June 9 – 18

Captains Meeting: \*Contact Kevin Dougherty at  
KevinDoc@gmail.com\*

### CMM&TC Canyon Kickoff

**Fish Days:** June 10 - 11

Captains Meeting: June 10th at Cape May Marlin &  
Tuna Club  
Weigh Ins: \*Contact CMM&TC Club Directly\*

### CMM&TC Junior Angler 16 & Under Tournament

**Fish Day:** June 18

Captains Meeting: June 17th at Cape May Marlin &  
Tuna Club  
Weigh Ins: \*Contact CMM&TC Club Directly\*

### The MidAtlantic Tuna Tournament

**Fish Days:** June 22 - 26

Captains Meeting: June 22nd at  
South Jersey Marina  
Weigh Ins: Canyon Club Marina

## JULY

### CMM&TC Independence Invitational

**Fish Days:** July 1 & 2

Captains Meeting: July 1st at  
Cape May Marlin & Tuna Club  
Weigh Ins: \*Contact CMM&TC Club Directly\*

### The MidAtlantic Cup - Blue Marlin Tournament

**Fish Day:** July 4th

Captains Meeting:  
\*Contact South Jersey Tournaments for Details\*  
Weigh Ins: Manasquan River NJ, Cape May NJ,  
Ocean City MD, Virginia Beach VA

### World Cup Blue Marlin Tournament

**Fish Day:** July 4th

Weigh Ins: Call Tournament Director,  
Robert "Fly" Navarro at 561-310-9214 for details

### War at the Shore with BHM&TC, MRM&TC, FRTC, and CMM&TC

**Fish Days:** July 4 - 10

Captains Meeting: \*Contact Your Club Directly\*  
Weigh Ins: \*Contact Your Club Directly\*

### South Jersey Yacht Sales Offshore Showdown

**Fish Days:** July 6 - 9

Captains Meeting: July 6th at Cape May Brewery  
Weigh Ins: Canyon Club Marina

### 56th Annual Cape May Marlin Tournament

**Fish Days:** July 28 - 30

Captains Meeting: July 28th at Canyon Club Marina  
Weigh Ins: Canyon Club Marina

## AUGUST

### OCM&TC Offshore Open

**Fish Days:** August 14 - 21

Captains Meeting: August 14th  
Weigh Ins: Ocean City Yacht Club

### BHM&TC 53rd Annual

### Beach Haven White Marlin Invitational

**Fish Days:** August 17 - 20

Captains Meeting: August 17th at  
Beach Haven Marlin and Tuna Club  
Weigh Ins: Beach Haven Commercial Marine District

### CMM&TC Ladies Day Offshore Tournament

**Fish Days:** August 19 – 20

Captains Meeting: August 19th at  
Cape May Marlin & Tuna Club  
Weigh Ins: \*Contact CMM&TC Club Directly\*

### 31st Annual MidAtlantic Tournament

**Fish Days:** August 21 - 26

Captains Meeting: August 21st at  
Canyon Club & Sunset Marina  
Weigh Ins: Canyon Club & Sunset Marina

### OCM&TC Marlin & Tuna Challenge

**Fish Days:** August TBD

Captains Meeting: \*Contact OCM&TC Directly\*  
Weigh Ins: Ocean City Yacht Club

### MRM&TC 42nd Annual Offshore Open

**Fish Days:** August 29 – September 5

Captains Meeting: August 29th at  
Crystal Point Yacht Club  
Weigh Ins: Brielle Yacht Club

## SEPTEMBER

### CMM&TC Labor Day Overnighter

**Fish Days:** September 3 – 4

Captains Meeting: September 2nd  
at Cape May Marlin & Tuna Club  
Weigh Ins: \*Contact CMM&TC Club Directly\*

### OCM&TC Labor Day Jamboree

**Fish Days:** September TBD

Captains Meeting: \*Contact OCM&TC Directly\*  
Weigh Ins: Ocean City Yacht Club

### OCM&TC Billfish Release Tournament

**Fish Days:** September TBD

Captains Meeting: \*Contact OCM&TC Directly\*  
Weigh Ins: Ocean City Yacht Club

### CMM&TC vs. OCMC Challenge Cup

**Fish Days:** September 17 – 18

Captains Meeting: September 10th at  
Cape May Marlin & Tuna Club  
Weigh Ins: \*Contact CMM&TC Club Directly\*





# OCMTC

Ocean City Marlin & Tuna Club

\$45,000  
IN CASH & PRIZES

2 day trips OR  
an overnight trip

## The 45th Annual **OFFSHORE OPEN** AUGUST 14TH - AUGUST 21TH, 2022

**Entry Fee:**

\$950 per boat

\$850 if registered

by July 31st

**CALCUTTA PAYOUTS:**

**Swordfish, Billfish Release, Tuna, Dolphin, Wahoo**  
**(Small Boat Calcutta for Boats 38' and Under)**

**CONTACT:**

Todd Eachus

(610)-633-3567

info@ocmtc.com



# Index to Advertisers

<b>Albemarle Boats</b>   140 Midway Drive, Edenton, NC 27932   (252) 482-7423   <a href="http://www.AlbemarleBoats.com">www.AlbemarleBoats.com</a> . . . . .	20
<b>Alexseal Yacht Coatings</b>   415 Jessen Lane, Charleston, NC 29492   (843) 654-7755   <a href="http://www.Alexseal.com">www.Alexseal.com</a> . . . . .	14
<b>Atlantic Marine Electronics</b>   5724 US 9, New Gretna, NJ 08224   (609) 296-8826   <a href="http://www.Atlantic-ME.com">www.Atlantic-ME.com</a> . . . . .	42
<b>Awlgrip/Interlux</b>   6001 Antoine Drive, Houston, TX 77091   (908) 964-2353   <a href="http://www.Akzonobel.com">www.Akzonobel.com</a> . . . . .	30
<b>Beach Haven Marin &amp; Tuna Club</b>   420 N. Pennsylvania Avenue, Beach Haven, NJ 08008   (609) 848-9844   <a href="http://www.BHMT.com">www.BHMT.com</a> . . . . .	84
<b>The Bridge Group Morgan Stanley</b>   1601 New Rd 1st Fl, Northfield, NJ 08225   (609) 383-2030 . . . . .	36
<b>Bucket Brigade Brewery</b>   205 N. Main St, Cape May Court House, NJ 08210   (609) 778-2641   <a href="http://www.BucketBrigadeBrewery.com">www.BucketBrigadeBrewery.com</a> . . . . .	76
<b>Canyon Club Marina</b>   900 Ocean Drive, Cape May, NJ 08204   (609) 884-0199   <a href="http://www.CanyonClubMarina.com">www.CanyonClubMarina.com</a> . . . . .	28
<b>Cape Harbor Motor Inn</b>   715 Pittsburgh Avenue, Cape May, NJ 08204   (609) 884-1006 . . . . .	74
<b>Cape May Marlin &amp; Tuna Club</b>   1390 Lafayette Street, Cape May, NJ 08204   (609) 884-1006   <a href="http://www.MarlinAndTuna.com">www.MarlinAndTuna.com</a> . . . . .	82
<b>Chart House Marine Electronics &amp; Outfitting</b>   3059 Ocean Heights Ave, Egg Harbor Township, NJ 08234   <a href="http://www.themarineoutfitter.com">www.themarineoutfitter.com</a> . . . . .	72
<b>Christi Insurance Group</b>   156 Stagecoach Road, Marmora, NJ 08223   (609) 390-8996   <a href="http://www.ChristiInsurance.com">www.ChristiInsurance.com</a> . . . . .	2
<b>Costa Marine Canvas</b>   333 South Vienna Avenue, Egg Harbor City, NJ 08215   (609) 965-1538   <a href="http://www.CostaMarineCanvas.com">www.CostaMarineCanvas.com</a> . . . . .	4
<b>DeSatnick Real Estate</b>   1001 Lafayette St. Cape May, NJ 08204   609-884-1300   <a href="http://www.desatnickrealestate.com">www.desatnickrealestate.com</a> . . . . .	Cover 4
<b>Fathoms at South Jersey Marina</b>   1231 Route 109, Cape May, NJ 08204   (609) 884-3907   <a href="http://www.SouthJerseyMarina.com">www.SouthJerseyMarina.com</a> . . . . .	44
<b>Haddon House / Krazy Salts</b>   288 Chester Ave, Medford, NJ 08055   (609) 654-7901   <a href="http://www.JanesKrazy.com">www.JanesKrazy.com</a> . . . . .	Cover 3
<b>Garmin</b>   1200 E. 15th Street, Olathe, KS 66062   (732) 691-9691   <a href="http://www.Garmin.com">www.Garmin.com</a> . . . . .	6
<b>Globe Petroleum</b>   3017 Route 9 South, Rio Grande, NJ 08242   (609) 465-1600   <a href="http://www.GlobePetroleum.com">www.GlobePetroleum.com</a> . . . . .	52
<b>Hank Sauce</b>   8605 Landis Avenue, Sea Isle City, NJ 08243   <a href="http://www.HankSauce.com">www.HankSauce.com</a> . . . . .	76
<b>Harbor View</b>   954 Ocean Drive, Cape May, NJ 08204   (609) 884-5444   <a href="http://www.HarborViewCapeMay.com">www.HarborViewCapeMay.com</a> . . . . .	74
<b>Henriques Yachts</b>   198 Hilton Avenue, Bayville, NJ 08721   (732) 269-1180   <a href="http://www.HenriquesYachts.inc">www.HenriquesYachts.inc</a> . . . . .	60
<b>High Noon</b>   <a href="http://www.FindHighNoon.com">www.FindHighNoon.com</a> . . . . .	52
<b>Huk</b>   <a href="http://www.HukGear.com">www.HukGear.com</a> . . . . .	12
<b>Humphree USA, Inc.</b>   103 Dixon Street, Selbyville, DE 19975   (757) 374-9435   <a href="http://www.Humphree.com">www.Humphree.com</a> . . . . .	46
<b>Interlux Paint</b>   6001 Antoine Drive, Houston, TX 77091   (908) 964-2353   <a href="http://www.Akzonobel.com">www.Akzonobel.com</a> . . . . .	30
<b>Invincible Boat Company</b>   4700 NW 132nd St, Opa-locka, FL 33054   (305) 685-2704   <a href="http://www.InvincibleBoats.com">www.InvincibleBoats.com</a> . . . . .	18
<b>Jarrett Bay</b>   530 Sensation Weigh, Beaufort, NC 28516   (252) 728-2690   <a href="http://www.JarrettBay.com">www.JarrettBay.com</a> . . . . .	66
<b>Jersey Cape Yachts</b>   2143 River Road, Egg Harbor City, NJ 08215   (609) 965-8650   <a href="http://www.JerseyCapeYachts.com">www.JerseyCapeYachts.com</a> . . . . .	70
<b>Joe Canal's Liquor</b>   1613 Route 47 South, Rio Grande, NJ 08242   (609) 886-9786   <a href="http://www.joecanals.com/rio-grande/">www.joecanals.com/rio-grande/</a> . . . . .	7
<b>Johnson &amp; Towers</b>   2021 Briggs Road, Mt. Laurel, NJ 08054   (856) 234-6990   <a href="http://www.JohnsonTowers.com">www.JohnsonTowers.com</a> . . . . .	8
<b>Jupiter Marine International</b>   1103 12th Avenue East, Palmetto, FL 32441   (941) 729-5005   <a href="http://www.JupiterMarine.com">www.JupiterMarine.com</a> . . . . .	22
<b>Kushner Drapery Manufacturing</b>   5305 Rt. 70, Pennsauken, NJ 08109   (856) 317-9696   <a href="http://www.KushnerDraperies.com">www.KushnerDraperies.com</a> . . . . .	80
<b>Lobster House Restaurant</b>   Fisherman's Wharf, Cape May, NJ 08204   (609) 884-8296   <a href="http://www.TheLobsterHouse.com">www.TheLobsterHouse.com</a> . . . . .	83



# Index to Advertisers

<b>Lucky Bones</b>   1200 Route 109 South, Cape May, NJ 08204   (609) 884-2663   <a href="http://www.LuckyBonesGrille.com">www.LuckyBonesGrille.com</a> . . . . .	80
<b>Mack Boring/Scania</b>   245 Belmont Rd, Somerset, NJ 08873   908-964-0700   <a href="mailto:info@MackBoring.com">info@MackBoring.com</a> . . . . .	78
<b>Mayers Tavern</b>   894 3rd Avenue, Cape May, NJ 08204   (609) 435-5078   <a href="http://www.MayersTavern.com">www.MayersTavern.com</a> . . . . .	46
<b>Merritt Boat &amp; Engine Works</b>   (772) 215-3108   <a href="mailto:AndersonKarlH@gmail.com">AndersonKarlH@gmail.com</a> . . . . .	48
<b>MidShore Electronics</b>   12507 Sunset Ave # 11, Ocean City, MD 21842   (410) 213-1212   <a href="http://www.Mid-Shore-Electronics.com">www.Mid-Shore-Electronics.com</a> . . . . .	72
<b>Ocean City Marlin &amp; Tuna Club</b>   PO Box 176, Mays Landing, NJ 08330   <a href="http://www.OCMTC.com">www.OCMTC.com</a> . . . . .	86
<b>ROFFS Ocean Fishing Forecasting Service, Inc.</b>   60 Westover Drive, West Melbourne, FL 32904-5126   (321) 723-5759   <a href="http://www.ROFFs.com">www.ROFFs.com</a> . . . . .	16
<b>Saltwater Café at South Jersey Marina</b>   1231 Route 109, Cape May, NJ 08204   (609) 884-2403   <a href="http://www.SaltwaterCafeCapeMay.com">www.SaltwaterCafeCapeMay.com</a> . . . . .	58
<b>Service Center at Canyon Club Resort Marina</b>   900 Ocean Drive, Cape May, NJ 08204   (609) 884-0333   <a href="http://www.CanyonClubMarina.com">www.CanyonClubMarina.com</a> . . . . .	74
<b>Slack Tide Brewery</b>   1072 Rt. 83 Cape May Court House, NJ 08240   609-478-2343   <a href="http://www.SlackTideBrewingCo.com">www.SlackTideBrewingCo.com</a> . . . . .	41
<b>Solace Boats</b>   308 S. Old County Road, Edgewater, FL 32132   (386) 302-6287   <a href="http://www.SolaceBoats.com">www.SolaceBoats.com</a> . . . . .	40
<b>South Jersey Marina</b>   1231 Route 109, Cape May, NJ 08204   (609) 884-1600   <a href="http://www.SouthJerseyMarina.com">www.SouthJerseyMarina.com</a> . . . . .	34
<b>South Jersey Tournaments</b>   1231 Route 109, Cape May, NJ 08204   (609) 884-1600   <a href="http://www.SouthJerseyTournaments.com">www.SouthJerseyTournaments.com</a> . . . . .	50
<b>South Jersey Yacht Sales</b>   900 Ocean Drive, Cape May, NJ 08204   (609) 884-1600   <a href="http://www.SouthJerseyYachtSales.com">www.SouthJerseyYachtSales.com</a> . . . . .	Cover 2
<b>South Jersey Yacht Sales and Service Center</b>   680 Bay Ave Somers Point, NJ 08244   (609) 927-1175   <a href="http://www.SouthJerseyYachtSales/service.com">www.SouthJerseyYachtSales/service.com</a> . . . . .	48
<b>Stone Harbor Marina</b>   1140 Stone Harbor Blvd., Stone Harbor, NJ 08247   (609) 368-1141   <a href="http://www.StoneHarborMarina.com">www.StoneHarborMarina.com</a> . . . . .	56
<b>Sturdy Bank</b>   701 Washington Street, Cape May, NJ 08204   (609) 898-1213   <a href="http://www.SturdyOnline.com">www.SturdyOnline.com</a> . . . . .	38
<b>Sunset Liquors</b>   106 Sunset Boulevard, Cape May, NJ 08204   (609) 435-5052   <a href="http://www/SunsetLiquorsNJ.com">www/SunsetLiquorsNJ.com</a> . . . . .	80
<b>Sunset Marina</b>   12911 Sunset Avenue, Ocean City, MD 21842   (410) 213-9600   <a href="http://www.OCSunsetMarina.com">www.OCSunsetMarina.com</a> . . . . .	32
<b>United Rentals</b>   4450 Rt. 130, Burlington, NJ 08016   (609) 387-4645   <a href="http://www.UnitedRentals.com">www.UnitedRentals.com</a> . . . . .	26
<b>Valhalla Boatworks/Valhalla Contender</b>   5724 U.S. 9, New Gretna, NJ 08224   (609) 296-2388   <a href="http://www.ValhallaBoatSales.com">www.ValhallaBoatSales.com</a> . . . . .	62, 64
<b>Viking Yachts</b>   Route 9, New Gretna, NJ 08224   (609) 296-6000   <a href="http://www.VikingYachts.com">www.VikingYachts.com</a> . . . . .	10
<b>Washington Inn</b>   801 Washington Street, Cape May, NJ 08204   (609) 884-5697   <a href="http://www.WashingtonInn.com">www.WashingtonInn.com</a> . . . . .	80
<b>WBC Design</b>   405 Bloomfield Drive #5, West Berlin, NJ 08091   856-753-1223   <a href="http://www.wbc.design.com">www.wbc.design.com</a> . . . . .	54
<b>White Marlin Open</b>   P.O. Box 737, Ocean City, MD 21843   (410) 723-6989   <a href="http://www.WhiteMarlinOpen.com">www.WhiteMarlinOpen.com</a> . . . . .	76
<b>Yamaha</b>   1270 Chastain Road, Kennesaw, GA 30144   866-894-1626   <a href="http://www.YamahaOutboards.com">www.YamahaOutboards.com</a> . . . . .	68
<b>Yellowfin Yachts</b>   2059 58th Avenue Circle East, Bradenton, FL 34203   (941) 753-7828   <a href="http://www.YellowfinYachts.com">www.YellowfinYachts.com</a> . . . . .	24



*Get Salty. Go Fishing.*

**KRAZY SALT'S  
BAIT SALT & BAIT BRINE**

[www.krazykoshersaltandbaitbrine.com](http://www.krazykoshersaltandbaitbrine.com)





# ***DESATNICK***

***REAL ESTATE, LLC***

**Specializing in Sales & Rentals**

**ASSISTING WITH ALL OF YOUR SOUTH JERSEY REAL ESTATE NEEDS**



1001 Lafayette Street  
Cape May  
609.884.1300

901 New Jersey Avenue  
North Wildwood  
609.551.4066

2505 Bayshore Road, Unit 1  
Lower Township  
609.886.6000



Todd H. deSatnick / Broker of Record



**[www.deSatnickRealEstate.com](http://www.deSatnickRealEstate.com)**